

**West Virginia Education Fund
1993 Annual Report**





Board of Directors

President C.R. "Bud" Hill, Jr. <i>Fayetteville</i>	Michael A. Albert <i>Charleston</i>
Vice President Lewis N. McManus <i>Charleston</i>	Robert Astorg <i>Parkersburg</i>
Secretary Sharon H. Rowe <i>Lewisburg</i>	Neil Bucklew <i>Morgantown</i>
Treasurer Herchiel Sims, Jr. <i>Charleston</i>	Virgil C. Cook <i>Daniels</i>
	Robert W. Culler <i>Princeton</i>
	Robert Harding <i>Charleston</i>
	Benjamin H. Hayes <i>Farmont</i>
	Roland Hobbs <i>Wheeling</i>
	Carole Hyre <i>Elkins</i>
	Lucien G. Lewin <i>Martinsburg</i>
	Peter B. Lilly <i>Charleston</i>

David S. Long <i>Charleston</i>	Ronald L. Solomon <i>Wheeling</i>
James R. McCartney <i>Morgantown</i>	Judy Thomas <i>Ashland, KY</i>
J. Thomas McKean <i>Nitro</i>	L. Newton Thomas, Jr.** <i>Charleston</i>
Robert A. McMillan <i>Martinsburg</i>	*Charles H. Wagoner <i>Weston</i>
Harley F. Mooney, Jr. <i>Charleston</i>	Dave Westfall <i>Clarksburg</i>
Dan R. Moore <i>Matewan</i>	Gary White <i>Gilbert</i>
Tamara Pettit <i>Weirton</i>	Henry Marockie <i>Ex Officio</i> <i>West Virginia Department</i> <i>of Education</i> <i>Charleston</i>
Jack Phillips <i>Beckley</i>	
Thomas A. Rotenberry <i>Charleston</i>	Directors Emeriti
Wanda Simpkins <i>Beckley</i>	*Thad Epps** <i>South Charleston</i>
Lance Sogan <i>Lancaster, OH</i>	*James Harless <i>Gilbert</i>
	*Priscilla Leavitt <i>Parkersburg</i>
	*Lacy I. Rice, Jr.** <i>Martinsburg</i>

**Former Presidents of the Education Fund
*These members were also founders of the Education Fund and have served since 1983

Staff

Vivian G. Kidd, Executive Director
John Corbett, Program Officer, Partnerships in Education
Wanda J. Guthrie, Secretary
Dr. Mary F. Hughes, Research Specialist
William R. Joerg, Jr., Development Director
Sue B. McKain, Program Officer, Read Aloud West Virginia
Emily B. Papadopoulos, Program Officer,
WV Business & Education Alliance
Deborah S. Ray, Secretary
Terri E. Worthy, Secretary/Office Manager

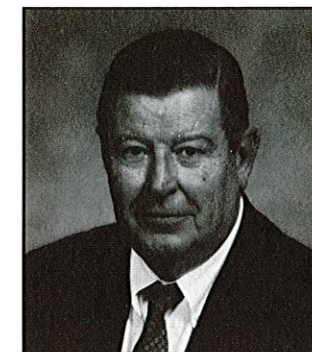
President's Message

The West Virginia Education Fund celebrates its 10th year of providing grants, programs and services that have promoted excellence and greatly enhanced the quality of public education in West Virginia. The achievements of the organization are remarkable and far reaching, as the programs of the Education Fund touch more individuals in a meaningful way than probably any other nonprofit, charitable organization in the state. For example:

- Students are discovering the joy of reading as their schools participate in Read Aloud West Virginia.
- Classroom teachers are inspired through Minigrants for Classroom Projects to be innovative in their approaches to learning.
- School administrators are moving their schools forward through local school improvement councils that are receiving assistance and guidance from the West Virginia Business and Education Alliance which we coordinate.
- Employees of businesses are able to share their time and talents with the schools through participation in Partnerships in Education.
- Parents are becoming more involved and are better acquainted with the college process by accompanying their children on visits to colleges and universities that are made possible through A Day on Campus, sponsored by Ashland Oil, Inc.
- Many public leaders and community members now have a better understanding about school funding from data presented in *The "Fair Share" Dilemma*, a publication produced by our Education Policy Research Institute.
- Schools have received much needed public recognition as the Schools Ahead-21 program honors their individual programs with monetary awards sponsored by C&P Telephone Company of West Virginia.

Simply stated, these and other programs have provided tremendous benefit for thousands of West Virginians and our services continue to improve. But we also have the continued need to expand our existing programs to increase their effectiveness and benefit.

This past year a Partnerships in Education Advisory Committee was created to obtain additional guidance from business and education leaders to insure that the program continues to provide tremen-



dous benefit to the students, schools and communities. Another new component of the program includes the institution of the Partnerships in Education Recognition Awards that will honor exemplary school-business partnerships. A substantial funding increase for Minigrants for Classroom Projects was made possible through support from the West Virginia Humanities Council for minigrants relating to the humanities; The Ashland Oil Foundation for math, science and technology minigrants; and, The West Virginia Commission on the Arts and the National Endowment for the Arts for minigrants in the Arts.

The past year also saw an increase in the number of contributors, evidence that more businesses, foundations, individuals and others are recognizing the value and benefit of the Education Fund's programs and services and the need to support these initiatives financially to insure their continuation. We offer our sincere appreciation and gratitude to all our contributors, and a special "thank you" to the Claude Worthington Benedum Foundation for its significant contributions to the Education Fund during the past 10 years. It is our hope that our current contributors continue their pledging of funds, and that our successes are such that our private fund-raising efforts inspire others to participate.

It has been a personal privilege to serve as president of the Education Fund and to work with a deeply committed Board of Directors, staff and corps of volunteers throughout the state to maintain the quality and expansion of our many programs. Thank you for your dedicated efforts.

C.R. "Bud" Hill, Jr.
C.R. "Bud" Hill, Jr.



10 Years of Excellence in Education

The Board of Directors of the West Virginia Education Fund was first formed in 1982 with Thad D. Epps as its president. The Education Fund became a legal entity when incorporated under the laws of West Virginia on July 13, 1983. Thus, it was 10 years ago that the education and business communities were first introduced to the nonprofit, business-led and business supported Education Fund through its initial program, Minigrants for Classroom Projects. During the 1983-84 school year 132 teachers were awarded over \$33,000, benefiting thousands of public school students. Today, the total minigrant awards exceed \$480,000.

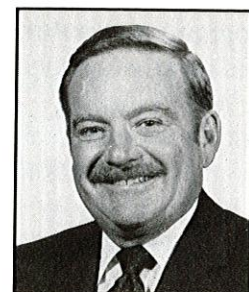
In the fall of 1984 its second program, Partnerships in Education, was launched, with two schools participating. By the third year, that number had jumped to 125, and two years later more than tripled to 380. Currently, more than 750 schools (83 percent) in all 55 county school districts are in partnerships.

Today, the Education Fund directs the efforts of seven programs that are related in ways that provide additional public support and involvement for quality schools. These programs have established the credibility of the Education Fund as an effective, professional organization in promoting excellence in education. For this reason, the Education Fund has been able to expand its agenda into the policy arena to advocate for better decisions affecting the classrooms and to have a greater effect on the school system in West Virginia.

The Education Fund's programs have built an educated, vocal, very strong constituency with the confidence and expertise to influence public school policy issues. This work at the policy level provides a framework for efforts to help public education be more responsive to the changing needs of children and the state's economy.

The purpose of the Education Fund is to advance the quality of education in the state by:

- **promoting cooperation and communication between public schools and the private sector**

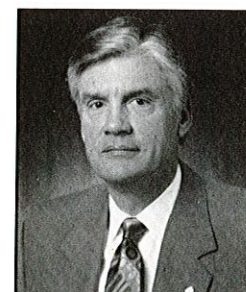
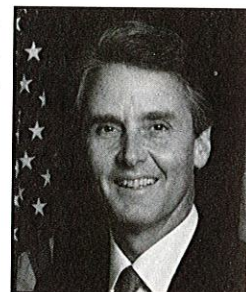


"After one year, the West Virginia Education Fund is an exciting success."

Thad D. Epps
President, 1982-83 and 1983-84

"The commitment to public education can no longer be just a matter of volunteerism or philanthropy. It is an essential investment in the future."

Gaston Caperton
President, 1984-85

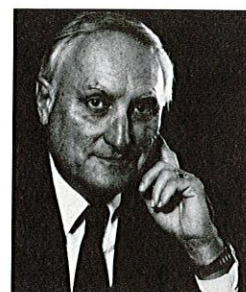


"By directing its energies and efforts where learning takes place...the Fund has marshalled private sector support for education while sending a message of interest, concern and support to educators."

David E. Lowe
President, 1985-86

"...its most important achievement may be development of a strong constituency for education that is emerging across the state."

Lacy I. Rice, Jr.
President, 1986-87



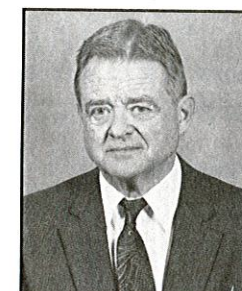
10 Years of Excellence in Education

- **recognizing and encouraging excellence and innovation in teaching and the learning process**
- **providing students and teachers with a realistic picture of the world of work and better understanding of the preparation needed for employment**
- **being a resource in optimizing the system of public education in West Virginia**

The Education Fund's positive impact has reached students in every grade and in every county of the state over the past 10 years. Whether it is through a Read Aloud West Virginia volunteer's visit to the classroom, a College Bound fieldtrip to a state university, exposure to the community via a business partner's collaboration, an exciting new unit of study funded by a teacher's minigrant award, the enthusiasm generated among newly empowered administrators and staff active in local school improvement councils or the more than \$697,000 provided in grants and awards, the Education Fund is making a difference.

In addition to the long-term financial and technical assistance from the Claude Worthington Benedum Foundation, many West Virginia businesses, corporations, organizations, foundations and individuals are increasingly supportive in providing their resources to the Education Fund to benefit the state's public school students.

The Education Fund also has been fortunate over the past 10 years to have enjoyed the vision and leadership of nine outstanding individuals who have served as presidents of the Education Fund. A message from the organization's current president, C.R. "Bud" Hill, Jr., appears on the preceding page. Photos and excerpts from past presidents' messages are provided on these pages in recognition of their enormous contributions.

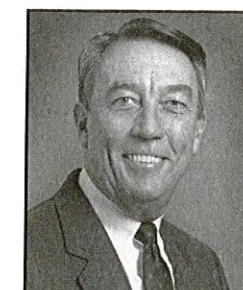
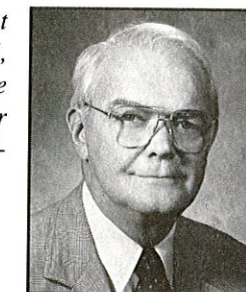


"Knowing that there are many avenues to excellence in education, the Fund has chosen those approaches where its contribution can, it is believed, have the most beneficial impact."

Odell H. Huffman
President, 1987-88

"I am proud of the West Virginia Education Fund, which has become an example to the nation of private sector involvement in public education."

John Lough
President, 1988-89

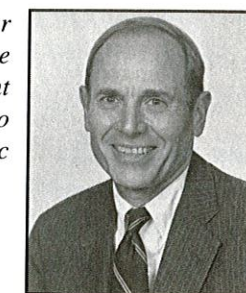


"...West Virginians are standing up and being counted in their cause to invest in education and in our children so as to ensure our and their future."

Doug Cochran
President, 1989-90

"Its mission and earlier initiatives have positioned the Fund to be a major participant in the current movement to enhance and reform public school education."

L. Newton Thomas, Jr.
President,
1990-91 and 1991-92





Programs and Activities

In the following pages, detailed descriptions are presented of each of the programs of the West Virginia Education Fund. The following is provided as a brief overview of the activities of the Fund.

Minigrants for Classroom Projects

Public school teachers apply for these small, competitive grants for special projects that will directly enhance their students' classroom learning experience. These cash awards support innovative approaches to learning for which no public funds are available. Many projects encourage parents, business leaders and community members to become more involved in education.

Partnerships in Education

This program links schools and businesses or community organizations in mutually beneficial, progressive and long-term relationships. This collaboration enables educators and business people to work cooperatively, helping today's students acquire the needed skills for success in the workplace and in life. More than 750 schools, in all 55 counties, have partnerships.

Network News, published six times during the academic year by the Education Fund, provides information about partnerships initiatives and the additional programs of the Education Fund.

College Bound

The College Bound Program focuses attention and resources toward increasing the number of high school graduates in West Virginia who attend college or other post-secondary training. The components of the program include A Day on Campus, the West Virginia College SORT computer software program and an annual directory of private sector scholarships available to West Virginia students.

Schools Ahead-21

This program recognizes exemplary school programs which are doing an outstanding job of preparing students for success in the 21st century. Monetary awards, sponsored by C&P Telephone Company of WV, encourage schools' pursuit of excellence.

Education Policy Research Institute

Funded by the Claude Worthington Benedum Foundation, this initiative was created to serve as an instrument for independent and scholarly research regarding issues affecting the quality of public school education in West Virginia. The initial report prepared by the Education Policy Research Institute, *The "Fair Share" Dilemma: Property Wealth, Per Pupil Revenue and Resident Ability to Support Public Elementary and Secondary Education in West Virginia*, explored current and alternative mechanisms for dealing with the funding of public schools. The Education Fund is uniquely positioned to provide policy research services because of its neutrality and its credibility among the public and private sectors.

WV Business & Education Alliance

This Education Fund program is an affiliate of the national Business Roundtable (BRT), and is working in West Virginia toward implementation of the BRT's nine essential components of a successful education system. In addition to its work assisting local school improvement councils, the Alliance's latest effort is the publication of a document entitled *West Virginia Education: Our Children, Our State, Our Future*. This analysis measures the difference between West Virginia's accomplishments and its state education goals, and makes recommendations regarding methods for meeting the goals.

Read Aloud West Virginia

Currently established in 30 West Virginia counties and growing, this program attacks the problem of aliteracy (lack of a desire to read) rather than illiteracy. Over 4,000 trained volunteer readers are reaching more than 50,000 children in 251 schools and such non-school settings as libraries, day care centers and homeless shelters. In addition, pre-school age children are being served in increasing numbers. Counties where Read Aloud West Virginia has been in operation for a significant period are reporting an increased circulation of children's books, and an improvement in listening skills, attention span and vocabulary among the children.



Minigrants for Classroom Projects

Minigrants are small competitive grants awarded to classroom teachers by the Education Fund in support of their innovative projects which directly affect and involve students, and for approaches to learning for which no public funds are available. The grants provide teachers with opportunities to put their exciting and often long-cherished ideas into practice.

Minigrants, which average \$300 each, inspire educators to be more creative and diversified in developing approaches to learning and enable teachers to incorporate stimulating learning techniques that enrich the curricula. Teachers commonly report that they are able to make lasting impressions by conducting projects which actively involve their students. The benefits of the grants often extend beyond the individual classrooms and into the communities as parents, business people and local residents become involved in the projects.

The awards are based on the academic value and creative nature of the proposals. Winners are selected by regional review committees comprised of business, education and community leaders who, through the applications, learn more about what teachers have to work with in the classrooms, what they lack and what they are requesting to accomplish their tasks. A continuing relationship between the Education Fund and the county school administrators assures that the projects under review are complementary to the counties' educational objectives and helps ensure administrative support of teachers' efforts.

Regional review committees evaluated 541 proposals and provided funding for the following 213 projects in 1992-93:

REGION I

McDowell County

Mrs. Bettye J. Bell
Gary Elementary School
Building the Best of Ourselves

Mrs. Fran C. Lambert
Gary Elementary School
Puppet Language

Ms. Phyllis J. Owens
Mount View High School
Sing Me a Story

Mrs. Deborah A. Hurley
War Elementary Annex
Zigzagging

Mrs. Diana K. Lockhart
War Elementary School
Science & Math In Lab Experience (S.M.I.L.E.)

Mrs. Brenda Kay Nevi
War Elementary School
Around the World in 180 Days

Mercer County

Mrs. Judith A. Cotten
Mercer Elementary School
Know Your State-First Hand

Mrs. Lynda J. Crotty
Mr. Wayne E. Crotty
Montcalm High School
Composing to the Beat of Your Own Drum

Ms. Louise J. Griffin
Ramsey Elementary School
Parental Involvement/Shared Reading

Ms. Jacqueline M. Williams
Wade Elementary School
Everyday Science

Raleigh County

Mrs. Linda L. Whitman
Bradley Elementary School
Explorers Discover Reading!

Mrs. Beverly M. Bazzie
Bradley Elementary School
This Land Is My Land

Mrs. Susan Bradberry
Mrs. Robin Wartella
Bradley Elementary School
Electronic Buddies

Ms. Janet L. Smith
Coal City Elementary School
Have A Ball Reading

Mrs. Debby Y. Aliff
Cranberry Prosperity Elementary
Writing Skills that are practiced through tutoring...

Mrs. Mary Ann Bishop
Daniels Elementary School
Reliving Our Past

Mrs. Audrey Marie Pitt
Ghent Elementary School
Give Yourself a Gift-Read a Book

Ms. Elaine C. Browning
Hollywood Elementary School
Pop - Up for Reading

Mrs. Betty J. Goodwin
Hollywood Elementary School
Big Books for Little People

Mrs. Connie S. Runion
Hollywood Elementary School
You Can Make A Difference

Mr. Barry C. Meadows
Park Junior High School
Good Vibrations

Summers County

Ms. Denise L. Pruitt
Jumping Branch Elementary School
SPECIMEN ALERT!

REGION II

Cabell County

Mrs. Sallie J. Sturm
Barboursville Elementary School
Books by Robert Munsch

Ms. JoAnn Bradshaw
Geneva Kent Elementary School
Big Brothers-Big Sisters

Ms. Stephanie Ann Carter
Meadows Elementary
Social Skills Training for... Role Models

Mrs. Rebecca Ray
Miller Elementary School
Portfolio: An Accurate Profile

Mrs. Carla S. Dunlap
Milton Elementary School
Math-It's in Your Hands

Ms. Nancy Murrell
Ms. Deborah Arbaugh
Milton Elementary School
M.A.T.H.

Mrs. Elizabeth H. Green
Milton Elementary School
Reading/Writing Portfolios

Mrs. Pamela L. Bailey
Spring Hill Elementary School
The Write Club For Me!

Mr. H. Jeffrey Smith
West Middle School
American Indians of the Appalachian Region

Lincoln County

Mrs. Lori Huffman
Griffithville Elementary School
Performing Puppets

Mrs. Debra A. Hesson
Hamlin High School
Crime Solution



Minigrants for Classroom Projects

Mrs. Vickie L. Linville
West Hamlin Elementary
Learning To 'Say It In Sign'

Logan County

Mr. Eugene Adkins
Hugh Dingess Grade School
Urban and Rural West Virginia

Mr. Denney E. Collins
Hugh Dingess Grade School
Listen to Learn

Mrs. Barbara J. Henson
Hugh Dingess Grade School
What's in the Stars and Beyond

Ms. Elinor S. Lambert
Hugh Dingess Grade School
KIDS KARDS, Inc.

Mrs. Mildred Napier
Hugh Dingess Grade School
Slippery Fishery Fun

Ms. Patricia A. Brannon
Logan Junior High School
UNI-5 - A Project In Student News Journalism

Ms. Mary F. Rush
Logan Central Jr. High School
Homework Hotline

Mrs. Susan Mankin
Man Junior High School
Pioneer Pride Newsletter

Mr. Thomas Gray
Man Junior High School
Mouse System

Mrs. Theresa Medford
Man Junior High School
Homespun Science

Mason County

Mr. Douglas Sturgeon
Central Elementary School
Sewing Up West Virginia

Ms. Helen K. Berkley
Mason Elementary School
History: A Dress Rehearsal Part II

Mingo County

Mr. Carl Parsley, Jr.
Lenore Junior High School
Acid Rain Contour Map

Ms. Sonya Picklesimer
Williamson High School
Bioremediation

Wayne County

Mrs. Eugenia Webb-Damron
Ceredo Elementary School
Stories 'R' Us

Mrs. Carla J. Hager
Dunlow Elementary School
Kindergarten's Cookin'Up Nutrition

Mrs. Rhonda W. Napier
East Lynn Elementary
WV History as an Integrated Curriculum

Mr. Frank L. Hubbard
Wayne High School
Local Slide Presentation

REGION III

Boone County

Mrs. Concetta T. Jarzynski
Boone County Kindergarten Academy
Kindergarten Economics

Mrs. Angela Jo Price
Madison Elementary School
Greek Week

Ms. Pamela Thompson
Van Elementary School
Loving Literature By Personal Exposure

Clay County

Ms. Cindy L. Dawson
Clay County High School
Make your own Flashcards

Ms. Brenda K. Krauklis
Clay Elementary School
Temperature Tracking

Ms. Carolyn S. Eason
Clay Middle School
Performing with Masks

Mrs. Leanna Hopkins
Mrs. Nancy Updegrave
Ivydale Elementary School
Bridging The Gap

Mrs. Toni Minger
Valley Fork Elementary School
Real Life

Mr. Randy White
Valley Fork Elementary
Listen to Me

Kanawha County

Miss Elizabeth Kay Surface
Belle Elementary School
Destination Mars

Mrs. Jerri L. Summers
Bridge Elementary School
Math For and By Kids

Mrs. Mary M. Smith
Capital High
Multiple Panel Canvas Mural

Mrs. Nikki Halstead
Carver Career Center
Memory Book

Ms. Deborah Lynn Hicks
Chandler Elementary School
Photo Essays - A Pictorial History of 6th Grade

Ms. Claudia S. Blackburn
Chelyan Elementary School
What If...? Essays Using Imagination

Mrs. Connie Ann Hays
Elk Elementary Center
Living Science Books

Mr. Robert M. Frostick
Horace Mann Junior High School
Lego Logo Computer Integration

Ms. Sandra K. Clifton
Ruffner Elementary School
Poetry Plus +

Putnam County

Mrs. Jacquelyn Lee
Hometown Elementary School
Hand Bells

Mrs. Lauretta Ghavami
West Teays Elementary School
West Teayranosaurus

Ms. Karen Hathaway
West Teays Elementary School
Butterflies

Mrs. Jane Wagoner
West Teays Elementary School
Paw Prints

Ms. Cathy Birdsall
West Teays Elementary School
Testing, testing 1-2-3!!

Mr. Jeffrey C. Pratt
Winfield Elementary School
Scanning the Future

REGION IV

Braxton County

Mrs. Brenda K. Bleigh
Burnsville Elementary
Step Back to Step Ahead: Hands-on Activities of Our Past

Fayette County

Mrs. Catherine Darling
Gauley Bridge Elementary School
MATH BY THE YEAR 2000

Ms. Christy G. Gill
Glen Jean Elementary School
Animals Around the World

Ms. Elsie M. Brinegar
Glen Jean Elementary School
Ben Franklin Stamp Collection

Ms. Jill Manon
Midland Trail High School
Living Color

Mrs. Rebecca L. Rector
Midland Trail High School
When I Grow Up ...

Mrs. Marsha K. Bishop
Nuttall Middle School
Literary Quilt

Mrs. Sandra Milton
Oak Hill Elementary School
L.O.V.E.-Letting Our Views Expand

Mrs. Janet S. Bowland
Scarbro Elementary School
Sea-nanigans!!

Greenbrier County

Ms. Linda Childers
Frankford Elementary School
Maps 'n' Math

Ms. Mary Scarborough
Lewisburg Elementary School
Butterfly Magic

Ms. Karen Lee McClung
Lewisburg Elementary School
WAY BACK WHEN

Ms. Carolyn Rudley
Ms. Connie Jackson
Lewisburg Elementary School
Handicapped Awareness Month

Minigrants for Classroom Projects

Ms. Pat Hanson
Lewisburg Elementary School
Happy Birthday, TJ!

Mrs. Paula Humen
Lewisburg Elementary School
Elementary Electronics and Radio

Mrs. Deborah J. McClung
Lewisburg Elementary School
The Stars Come Out

Ms. Anne L. Stuart
Lewisburg Elementary School
ABC'S and Food

Mrs. Margaret B. Burns
Lewisburg Elementary School
Hands On Science, The Home-School Connection

Ms. Karen Goodall
Lewisburg Elementary School
"Homemade" Phys. Ed.

Ms. Claudia Martin
Lewisburg Elementary School
The Culture and Language of France

Ms. Carol S. Workman
Ronceverte Elementary School
Math Manipulation an Aid ... in the Textbook

Ms. Rebecca O. Byars
Smoot Elementary School
Hats On For Reading

Ms. Linda Lou Spencer
White Sulphur Springs Elementary
The 'Little' General Store

Ms. Brenda Sue Spencer
White Sulphur Springs Elementary
Eating Our Way Through the Alphabet

Mrs. Julia B. Gillilan
White Sulphur Springs Elementary
Seeds and Civilization

Ms. Helen F. Spencer
Williamsburg Elementary School
Things That Fly

Nicholas County

Mrs. Barbara A. Crawford
Mt. Nebo Elementary School
Rock Across the U.S.

Mrs. Sandra M. Hess
Mt. Nebo Elementary School
Through and Through-Red, White, and Blue

Mrs. Marsha C. Bailes
Summersville Gifted Resource Center
Quests Undertaken in Literature Today

Pocahontas County

Mrs. Judith C. Kane
Green Bank Elementary School
It's My Earth, Too!

Ms. Elizabeth M. Rabel
Green Bank Elementary School
As The Crow Flies, A Trip Through the Nifty-Fifty

Mrs. Karen G. Friel
Pocahontas County High
Spanish Tourist Brochure

REGION V

Calhoun County

Ms. Leah Offutt
Pleasant Hill School
Animal Adventure With The Author...Eric Carle

Mrs. Margaret A. Bennett
Pleasant Hill School
Weather Patterns and Forecasting

Ms. Cheryl A. Fiedorczyk
Pleasant Hill School
Hand In Hand

Jackson County

Mrs. Lisa R. Smolder
Ripley Elementary School
CREATURE FEATURE-Spiders, Insects, & Sea Life

Ms. Sheila D. Byers
Ripley High School
How Do We Get There?

Ms. Barbara L. Heckert
Ripley High School
DNA Fingerprinting

Roane County

Mrs. Sheila Jones
Ms. Pam Ritchie
Mrs. Sharon Boggard
Mrs. Mary Bailey
Geary Elementary School
Geary School Soil Stabilization/Beautification

Mrs. Linda F. Coffindaffer
Spencer Primary Center
Signed, Sealed and Delivered

Mrs. Nancy V. Moore
Walton High School
Science and Steinbeck

Tyler County

Mr. Joseph W. Griffith
Sistersville High School
A Look at Embryology

Mrs. Paula J. Stombeck
Sistersville Elementary School
SUNDAE School

Mrs. Judith D. Tice
Sistersville Elementary School
As We See It...

Mr. David P. Langer
Tyler County High School
Forensic Chemistry

Wood County

Ms. Sandra L. McKinney
Jefferson Elementary School
Bookette

Mrs. Lois E. Richards
Kanawha Elementary School
Readalong

Ms. Judith A. Miller
Ms. Tammy Biondillo
Lubeck Elementary School
Dark Room:Behind and Beyond Black and White

Ms. Mary Lee Ruppel
McKinley Elementary
Meeting' West Virginia Authors

Ms. Julia R. Lee
Parkersburg South High School
Voices From the High School

Mr. Grant A. DeGarmo
VanDevender Junior High School
Chemistry Around Us

Mr. Keeling L. Fife
Wood County Technical Center
Recycling - A Real Experience

REGION VI

Hancock County

Ms. Dody E. Nile
Jefferson Elementary School
Feet Across America

Alice J. Donell
New Cumberland Elementary
Extra, Extra-The Newspaper Has Come

Mrs. Paula Williams
Oak Glen High School
Fun with the Sun

Mrs. Cheryl J. Emery
Oak Glen Middle Elementary
Comic Book Capers

Mrs. Walda K. Elliott
Weir Senior High School
Utilizing Public Transportation

Mrs. Sandra M. D'Alesio
Weirton Heights Elementary
Big Discoveries for Little Ones

Marshall County

Ms. Rebecca S. Walters
John Marshall High School
First Flight

Mrs. Linda M. Brinkman
John Marshall High School
Dolls



Children at War Elementary celebrate "Tea Time in England" as they participate in teacher Brenda Nevi's minigrant "Around the World in 180 Days."



Minigrants for Classroom Projects

Mrs. Bonnie L. Hinerman
Limestone Grade School
The World of Magnets

Mrs. Anita D. Freeland
Moundsville Junior High School
Conflict Mediation and Resolution

Mr. W. Marc Harshman
Sand Hill Elementary
Granny will your dog bite...

Ohio County

Miss Jeanette A. Miller
Middle Creek Elementary
Animals in Our Class

Mrs. Judith A. Spencer
Middle Creek Elementary
Instant Photography in the Elementary Art Classroom

Mrs. Linda R. Kerr
Warwood Middle School
Hooked on Pondnics

Mr. Mark A. Nardone
Wheeling Middle School
Fitness Improves Behavior

Ms. Dianna M. Vargo
Wheeling Park High School
S(3) = Students Shop For Seniors

Brooke County

Mrs. Linda D. Barker
Jefferson Primary School
Planting Seeds For Life-Long Readers

Mr. Gary L. Gorby
Brooke High School
Just Another Shell on the Beach?

Mrs. Sharon M. Harper
Brooke High School
Poetry Alive! Here & Now!

Mrs. Denise L. Pasinetti
Wellsburg Middle School
Healthy Attitudes

Wetzel County

Ms.Carolynn C. Jackson
Paden City Elementary School
Listen To the Distant Drumbeat

Mrs. Mary Amy Kessinger
Hundred High School
Pilot American Chestnut Breeding Plot

REGION VII

Barbour County

Mrs. Patty A. Cleavenger
Belington Elementary School
Math Concepts through Poetry

Mrs. Donna J. Endler
Belington Elementary School
Belington Backyard Bird Habitat

Mrs. Susan Talbott
Belington Elementary School
Stretch Your Wings

Mrs. Sandra K. Hoyman
Mr. Harry M. Post
Belington Elementary School
White House

Mrs. Pamela E. Raschella
Belington Elementary School
Working With Weather

Mrs. Carmen D. Henninger
Philip Barbour High School
Un Debut de Francais

Doddridge County

Ms. Trudy R. Smith
Doddridge Co. Middle School
Exploring Our World

Mr. John A. Post
Doddridge Co. Middle School
Rocky Road Nature Trail

Gilmer County

Mrs. Twila G. Moyers
Gilmer County High School
Language 'n More

Harrison County

Mrs. Vickie L. Luchuck
Lumberport Elementary School
Literature for Life

Mrs. Rebecca A. Todd
North View Elementary
A Year of Literature-Based Enrichment

Mrs. Charlotte A. Gunter
Roosevelt-Wilson Jr. High
Newbery Award Winners

Mrs. Jacklin Lea Romeo
Simpson Elementary School
Water Life

Mrs. Paula D. Nelson
Washington Irving High School
Computer Probability and Statistics

Lewis County

Ms. Beth Ann Dunham
Robert L. Bland Middle School
Kaleidoscope Math

Marion County

Ms. Mary E. Harker
Fairview Elementary School
Special Delivery Mail Service

Mrs. Beth Knotts
Fairview Middle School
Project Pass

Ms. Joann L. Brookover
Rivesville Elem./Middle School
Look, Magnify and Discover

Monongalia County

Mr. Brian E. Bailey
Daybrook Elementary School
Academic Games For All

Mrs. Theodora Cox
Riverside Elementary School
Archaeology and Fossil Fuels

Preston County

Ms. Donna Contic
Central Preston Junior High
Revival of Preston Academy

Mr. Marty Schatz
Fellowsville Elementary School
Preston Co. Towns Historic Revues

Ms. Sandra Fedorko
Kingwood Elementary School
In Celebration of Differences

Mrs. Janice M. Hirst
Mrs. Patricia E. Titchenell
Kingwood Elementary School
Opening Minds to Math

Mrs. Stephanie Bayles
Kingwood Elementary School
Read With Me

Mrs. Shelia B. Brown
Kingwood Elementary School
Places to Go, People to Meet!

Randolph County

Mr. Charles G. Gear
Elkins High School
Cell Chemical Education-Loving & Learning

Dr. Anne P. Crum
Mr. Wayne Gillispie
Mr. Dan Gillenwater
Harman School
Measurement Field Day

Mrs. Tammie Hull
Harman School
Measurement and Manipulatives

Ms. Linda Aliveto
Ms. Karen Dunkerley
Midland Elementary School
Mind Munchers, Inc.

Ms. Paula E. Heinke
Randolph County Vo-Tech Center
Book Cooks

Ms. June L. Davis
Ms. Barbara W. Criss
Midland Elementary School
Colonial Connections

Mrs. Donna J. Hamrick
North Elementary School
Linking Math to Literature

Ms. Helen S. Long
North Elementary School
Polar Bear Express II

Taylor County

Mrs. Donna K. Boyles
Flemington Elementary School
Taking the Fright out of Writing

Mrs. Darlene Martin
Grafton High School
Par for the Geometry Course

Tucker County

Mrs. Daryla P. Rapp
Davis-Thomas Elementary/Middle School
ONE EARTH

Mrs. Kimberly A. Falls
Parsons Elem./Middle School
Appalachian Quilt

Upshur County

Mrs. Dianna L. Petrosky
Union Elementary School
Caldecott Goes to College

REGION VIII

Berkeley County

Mrs. Carol S. Hayes
Martinsburg High School
Young Adult Fiction Supplementary

Minigrants for Classroom Projects

Mrs. Mary G. Carney
Martinsburg South Middle
Drama in Education

Ms. Mary C. Pistner
Martinsburg North Middle School
Creating Learners Better...

Mrs. Beverly A. McDonald
Martinsburg North Middle School
Creature Feature

Grant County

Mrs. Judy O. Cooper
Petersburg Elementary School
Cells/Reproduction of Plant and Animals

Mrs. Brenda B. Sites
Petersburg High School
Take Me To The River

Mrs. JoAnn Snyder Harman
Petersburg High School
Wild Wonderful Writing

Mrs. Diana R. Mielecki
Union High School
Mining the Past

Hampshire County

Ms. Kelly L. Duckworth
Romney Elementary School
The Fabulous Fifties

Mrs. Terrie Groves
Slanesville Elementary School
ON STAGE With the Fifth Grade

Hardy County

Mrs. Jackie Williams
Moorefield High School
Math Manipulatives

Dr. Sharon Erickson Harman
Moorefield High School
Techno Demo

Jefferson County

Mrs. Raye Ellen Blackford
C. W. Shipley Elementary School
M.A.T.H.

Ms. Lisa R. Long
C. W. Shipley Elementary School
How Does Your Garden Grow?

Mrs. Betty Sue Lloyd
C.W. Shipley Elementary School
Weather Wizards

Dr. Virginia C. Demchik
Jefferson High School
COPS at the Supermarket

Ms. Carolyn L. Bradford
North Jefferson Elementary
Fun with Feathered Friends

Mrs. Carole Anne Russler
North Jefferson Elementary
World Bank

Mr. Joseph W. Starkey
Ranson Elementary School
Building Habitat Awareness

Mrs. Deborah Y. Shaw
Shepherdstown Jr. High School
Paper or Plastic, Ma'am?

Mr. James G. Jenkins
South Jefferson Elementary
Bluebird Bungalows

Ms. Suzanne Offutt
South Jefferson Elementary
Applications of the Speechmaster II

Mr. Thomas C. Wells
South Jefferson Elementary
The Martians Are Here

Mineral County

Ms. Sheri A. Speary
Fort Ashby Primary School
Science Abounds

Mrs. Paula W. Ridder
Keyser Primary/Middle
East Meets West (Virginia)

Mrs. Frances A. Vogtman
Short Gap Primary School
CLAP Together

Dental Health Minigrants for Classroom Projects 1992-1993

Monroe County

Mrs. Sandra B. Pell
Gap Mills School
Miles of Beautiful Smiles

Raleigh County

Mrs. Elaine C. Browning
Hollywood Elementary
Sweet Smiles NOT Sweet Teeth

Mrs. Carolyn S. Lloyd
Independence High School
A Dental Health Clinic

Logan County

Mr. Michael J. Bartram
Hugh Dingess Grade School
Dangers of Using Smokeless Tobacco

Ms. Martha Mullins
Logan Grade School
Dr. D. Kay and the Cuspids

Wayne County

Ms. Betty Anne Hale
Buffalo High School
Fire Without Smoke

Kanawha County

Mrs. Daisy F. Stemple
Cross Lanes Elementary
Healthy Teeth for Happy Smiles

Jackson County

Mrs. Sara Harris
Ripley Elementary
We help the 'Tooth Fairy' Teach

Ritchie County

Mrs. Karen Waybright
Ellenboro Elementary
Teeth on Wheels

Hancock County

Mrs. Jean L. Placek
Weirton Heights Elementary
Dental Emergency Care

Barbour County

Mrs. Sue Ricottilli
Belington Elementary
Learning about our Teeth

Harrison County

Mrs. Chris Babyak
Mrs. Debra Nutter
Roosevelt-Wilson Junior High
Not named

Marion County

Mrs. Mary E. Harker
Fairview Elementary
A Matter of Taste

Berkeley County

Melissa O'Brien, MA
Kathy G. Raymond, RDH, MS
Barbara Komives, RDM, MS
South Middle School
Dental Health Education for Special Education Students Grades 6-8

The Education Fund expresses its sincere appreciation to the following sponsors of specific Minigrants for Classroom Projects:

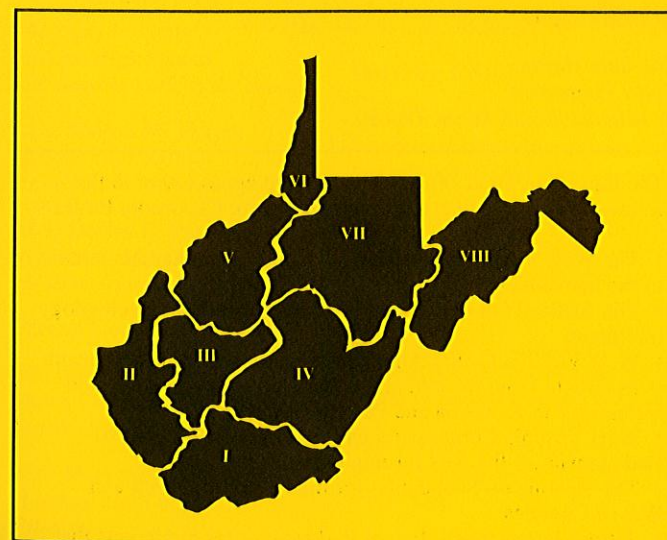
- The West Virginia Humanities Council for minigrants relating to the humanities
- The Ashland Oil Foundation for math, science and technology minigrants
- West Virginia Dental Alliance for minigrants in dental health
- Monsanto Fund for minigrants regarding science, math and technology in Kanawha and Putnam Counties
- West Virginia Commission on the Arts and the National Endowment for the Arts for minigrants in the Arts
- The Huntington Foundation for minigrants in Cabell and Wayne Counties
- Altrusa International, Inc. of Parkersburg for minigrants that support Read Aloud West Virginia projects in Wood County



Grant Summary

Minigrants for Classroom Projects
(Awarded in 1992-93)

Region	Number of Awards	Amount
I	22	\$ 6,213.19
II	30	7,300.19
III	24	7,219.88
IV	32	5,244.41
V	20	5,237.82
VI	22	4,938.88
VII	37	7,976.42
VIII	26	5,635.62
Total in 1992-93	213	\$ 49,766.41
Special Dental Health Minigrants (1992-93)	14	\$ 2,000.00
Read Aloud West Virginia Project Grants (1992-93)	3	\$ 2,591.00
Minigrants Awarded in previous years	1805	\$ 428,471.29
TOTAL	2035	\$ 482,828.70



Grant Review Committees

REGION I

Ms. Pam Bailey
Mr. Jerry Beasley
Mr. Joe Blankenship
Mr. Edward Bosley
Dr. Joyce Foster
Dr. William Matthews
Dr. Stuart McGehee
Ms. Carol Morgan
Mr. John O'Neal
Honorable Hulett Smith
Mr. Ike Southern
Mr. David Springston
Mrs. Frances Wayland

REGION II

Mr. Louis Capaldini
Mr. James Casto
Mrs. Dee Kapourales
Dr. Paul Lutz
Ms. Barbara Maynard
Mrs. Mary Midkiff
Ms. Beverly Smith
Mr. Graham Smith
Ms. Ruth Sullivan
Mrs. Carol Taylor
Mrs. Anita Unger
Mrs. Elizabeth Willis
Mr. Kenneth Woodring

REGION III

Mrs. Rebecca Burns
Mr. Jim Davis
Dr. Norman Fagan
Mr. Steve Goodwin
Mr. John Hicks
Ms. Miriam Hopkins
Ms. Dixie Jarvis
Mr. Jeff Krauklis
Ms. Shawn Patterson
Mr. Tom Stebbins
Mr. Gary Sumpter
Dr. Rita Wicks-Nelson
Mr. Ron Williams

REGION IV

Mr. Ronald Blankenship
Ms. Pearl Carter
Mrs. Martha Dean
Mrs. Nancy Keffer
Ms. Linda Lindsey
Mr. James Marsh
Mr. Charles McElwee
Ms. Darlene Newell
Dr. Millie Petersen
Mrs. Sharon Rowe
Ms. Jane Sharp
Mr. Doug Walters
Ms. Alesia Wayne
Mr. Ronald Williams
Ms. Susan Woods
Mr. Mike Wyatt

REGION V

Ms. Mary Brown
Mr. Robert Eakins
Mrs. Barbara Erwin
Mrs. Kay Goodwin
Mrs. B.J. Hathaway
Mr. Ken Jobe
Mr. James Lydon
Mr. Charles Poole
Mrs. Susan Ross
Mrs. Anna Shank
Mr. Lou Takacs
Ms. Sandra Weese
Mr. Larry Williams

REGION VI

Dr. Les Cline
Dr. Ron Hutkin
Mr. Matz Malone
Mr. Donald Mason
Mr. Jeff Mauck
Mr. William Niesslein
Mr. John Paull, Jr.
Dr. Bonnie Ritz
Ms. Tina Silvis
Ms. Margaret Sine
Dr. Michael Strada
Mr. F. M. Vorhees

REGION VII

Mr. Bill Ashcraft
Mr. John Babyak
Mr. John Cooper
Mr. Ron Dellinger
Ms. Sharon Diaz
Mr. Thomas Gyongyosi, P.E.
Mr. Richard Hannah
Mr. Hugh Hitchcock
Mr. Robert Kittle
Dr. Ken Murray
Dr. Larry Parsons
Dr. Joe Paull
Ms. Becky Poe-Henderson
Ms. Anne Selinger
Ms. Ann Serafin
Mr. Lynn Westfall

REGION VIII

Dr. Charles Duffy
Mr. David Galbreath
Mr. Conrad Hammann
Ms. Phoebe Heishman
Mr. Denver Hipp
Mr. Meryl Kiser
Mr. David Lyons
Ms. Mary McCune
Mr. Ken Pack
Ms. Brenda Riffle
Mr. Jim Seibert
Mr. Ronald Whetzel
Mr. Michael Wilson
Dr. Al Canonic

Schools Ahead-21

Schools Ahead - 21 is a competitive awards program that honors and provides monetary recognition for school programs that are preparing students for the anticipated educational requirements for success in the 21st century.

Sponsored by C&P Telephone Company of West Virginia, Schools Ahead-21 awards recognize the creative and successful accomplishments of public schools. Individual school programs providing students with exceptional learning opportunities are considered for the award rather than the school as a whole. School programs that show creative utilization of the expertise and resources of the private sector, such as programs of the Education Fund, are encouraged. Additional elements considered in the selection process include student achievement, professional development, teamwork among faculty and community and preparation of students for success in the 21st century.

One award of \$4,000 and two awards of \$2,000 each are presented in each of the three categories: Elementary school, middle/junior high school and high school.

Each public school in West Virginia may annually submit one established program for consideration for the award.

Winning school programs are selected by the Education Fund's Board of Directors or its designees. The Board's decisions are based on applications submitted by the schools followed by on-site visits to the finalists schools.

Winning school programs for 1993:

Elementary

- \$4,000 *Parents as Education Partners*
Atenville Elementary
Lincoln County
- \$2,000 *After-School Program*
McKinley Elementary
Wood County
- \$2,000 *Parent/Home Tutorial Video Program*
McNinch Elementary
Marshall County



Middle

- \$4,000 *Reading 30,000 and Still Counting...*
Beverly Hills Middle
Cabell County
- \$2,000 *Gifted Students At-Risk Program*
Miller Junior High
Marion County
- \$2,000 *Technology Education*
Warwood Middle
Ohio County

High

- \$4,000 *Parkersburg South/GE Foundation College Bound Project*
Parkersburg South High
Wood County
- \$2,000 *Post Secondary Education/Career Investigation*
Capital High
Kanawha County
- \$2,000 *Regular Education Initiative*
Ravenswood High
Jackson County



Representatives of Beverly Hills Middle School in Cabell County, which received a \$4,000 Schools Ahead-21 award.



Education Policy Research Institute

The Education Policy Research Institute is an initiative created by the Education Fund to serve as an instrument for independent and scholarly research regarding issues affecting the quality of public school education in West Virginia.

Supported through a grant from the Claude Worthington Benedum Foundation, the goals of the Education Policy Research Institute are to:

- (1) Conduct research and analysis on public policy issues in public school education and related fields;
- (2) Educate the public about important public school education policy issues facing West Virginia; and,
- (3) Encourage the use of the Institute's research and study to affect the content or outcome of public policy in West Virginia regarding public school education.

The initial report prepared by the Education Policy Research Institute, *The "Fair Share" Dilemma: Property Wealth, Per Pupil Revenue and Resident Ability to Support Public Elementary and Secondary Education in West Virginia*, encompassed the problems of the public and the state dealing fairly with the funding of public schools and the variability among the county school districts to support education.

The report was designed to provide information to all persons interested in school financing issues in West Virginia. More than 4,500 copies of the report were distributed to school administrators, local and state board of education members, business leaders, legislators, Parent-Teacher Association members and others.

The research specialist who prepared the report provided 34 tailored presentations in 22 counties as a public service to foster enlightened public discussion about school funding.

Positive public response to *The "Fair Share" Dilemma* indicates a need in West Virginia for independent, objective and scholarly research on issues affecting public school education. The Education

Fund is uniquely positioned to provide this service because of its neutrality and its credibility among the public and private sectors.

A second research project currently being conducted proposes to identify the characteristics of elementary schools in West Virginia that consistently produce higher levels of student achievement than other elementary schools that serve similar students.



Partnerships in Education

The Partnerships in Education Program links schools with businesses or other community organizations in mutually beneficial, progressive and long-term relationships that enable educators and business people to work cooperatively to assist today's students with acquiring the needed skills for success in the workplace and in life. Partnerships help put resources where they can provide the most benefit in the schools and in the communities. The focus of the program is to enhance the learning experiences of the students in the classrooms of West Virginia.

The Education Fund's Partnerships in Education Program is among the largest initiatives of its kind in the country. Currently, more than 750 schools (83 percent) in all the state's 55 county school districts are in partnerships with businesses or community organizations. Evidence clearly supports the fact that student and school performance improve when the community and local business acknowledge the importance of the public schools and become active participants.

The objectives of the program are:

- To bring business people into the schools to work with the students, teachers and administrators on projects which educators think will be helpful and business people feel qualified to accomplish;
- To give students and teachers a realistic picture of the business world and of the preparation students need for success;
- To supplement classroom studies with relevant learning experiences in business and industry; and,
- To give business people an understanding of the education system, how it works, its strengths and its problems.

Partnerships foster extensive collaboration between the public schools and the private sector. Under the definition of the Education Fund's program, partnerships distinguish themselves from other types of school-business relationships in the following ways:

- Truly effective partnerships have an active steering committee consisting of individuals from the school and from the business who meet regularly to

develop the goals of the partnerships and implement projects and programs to achieve those goals.

- Partnerships conduct projects on a frequent basis throughout the school year.
- Partnerships are involved in activities which utilize the human resources and expertise of business employees to benefit the students.
- Partnerships are cooperative and mutually beneficial relationships that encourage both the schools and the businesses to share their resources for the benefit of the other.

Partnerships provide important classroom enrichment activities including mentoring and tutoring programs, career awareness activities, read aloud activities, school-based incentives programs, and classroom presentations that illustrate the relevance between education and success in the workplace. Some partnerships are starting to expand their collaborative efforts by working on school-based projects with parents, local agencies and other segments of the individual communities. Moreover, some partnerships are working collectively in particular areas. The elementary (feeder) schools that "feed" their students to a particular middle school that in turn feeds its students to a given high school often determine what education issues exist in their area and then work collaboratively to address those issues.

Two new components of the Partnerships in Education Program are: (1) A recognition awards program to honor exemplary partnerships in the state, and (2) an advisory committee comprised of business and education leaders who are volunteering their expertise and providing guidance to ensure that the partnerships continue to provide significant benefit to the students, schools and communities. Michael A. Albert, a member of the Education Fund's Board of Directors, is serving as the Chairperson of the advisory committee.

Many of the partnerships initiatives occurring throughout West Virginia are described in the Education Fund's newsletter, *Network News*, that is published six times during the academic year.



Partnerships in Education

SCHOOL	BUSINESS
BARBOUR COUNTY	
Barbour County Vocational Belington Elementary Junior Elementary Kasson Elementary/Middle	Broadus Hospital/Hardee's Shop N Save/Philippi Inn Laurel Mountain Inn/Junior Quik Stop Builder's Center Inc./ Sunrise Construction/ Scoopy's Ice Cream Parlor Schoonover-Stemple Funeral Home/ Pantry Store/Godfather's Pizza/ Stemple-Forman Funeral Home Crouch Chevrolet-Oldsmobile/ Hardee's
Mount Vernon Elementary	McDonald's of Bridgeport/ Hills Department Store/ L&S Sporting Shop Philippi City Police Dept./ Barbour Co. Sheriff's Office
Philip Barbour High	
Philippi Elementary	
Philippi Middle	
BERKELEY COUNTY	
Back Creek Valley Elementary Bedington Elementary	Berkeley County Chamber of Commerce Handy & Harman Automotive/ Aker Plastics
Berkeley Heights Elementary	Martinsburg Computer Center/ Blue Ridge Bank
Bunker Hill Elementary Burke Street Elementary	Shenandoah Gas Company Bowles Rice McDavid Graff & Love/ Howard Delivery Service, Inc. Peoples National Bank - Inwood Branch The Woods Resort Veterans Administration Medical Center One Valley Bank Capitol Cement Corporation C&P Telephone Co. of WV WEPM/WKMZ Radio/ Peoples National Bank/ Smith-Nadenbousch Insurance, Inc. General Motors
Gerrardstown Elementary Hedgesville Elementary Hedgesville High Hedgesville Middle Inwood Primary James Rumsey Tech. Institute Marlowe Elementary	Peoples National Bank Old National Bank Corning, Inc. AT&T/ Farmers & Mechanics Insurance F&M Bank - Martinsburg City Hospital Manpower Temporary Services E. I. Dupont de Nemours Co. 167th TAG/CC WV Air National Guard Van Wyk Enterprises
Martinsburg High Martinsburg North Middle Martinsburg South Middle Musselman High Musselman Middle	
Pikeside Learning Center Rosemont Elementary Tomahawk Elementary Tuscarora Elementary Valley View Elementary Winchester Avenue Elementary	Costa IGA Black's Foodland/Wendy's Omar Mining Company Eastern Associated Coal Corp. Matewan National Bank of Danville Boone County Postmasters Assoc. McDonald's Eastern Associated Coal Corp. Bank One-Madison Pizza Hut IGA Westmoreland Coal Co.- Hampton Division Madison Rotary Club/ Appalachian Power Company
BOONE COUNTY	
Ashford-Rumble Elementary Boone County Career Center Boone Co. Kindergarten Acad. Comfort Elementary Danville Elementary Jeffrey-Spencer Elementary Lory-Julian Elementary Madison Elementary Madison Middle Nellis Elementary Racine-Peytona Elementary Ramage Elementary	
Scott High	

SCHOOL	BUSINESS
Sherman High Sherman Jr. High Sylvester Elementary Van Elementary	Whitesville State Bank Whitesville State Bank Elk Run Coal Company Eastern Associated Coal Corp./ McCoy's Discount Eagle Nest, Inc. Eastern Associated Coal Corp. Whitesville State Bank
Van Junior-Senior High Wharton Elementary Whitesville Elementary/Jr. High	
BRAXTON COUNTY	
Braxton County High	Monongahela Power Co./ Minnich Florist & Gifts/ Elk River Foodland/ WV Home Extension Office Home National Bank US Army Corps of Engineers Michael Motors Inc. Go Mart Coastal Lumber Co., Pioneer Division/ Kroger Company Product Distributors US Army Corps of Engineers
Braxton County Middle Burnsville Elementary Davis Elementary Flatwoods Elementary Frametown Elementary	
Little Birch Elementary Sutton Elementary	
BROOKE COUNTY	
Alternative Learning Center Bethany Primary Brooke High Collier Primary Follansbee Middle Franklin Primary	The Pillsbury Company Bethany College Koppers Industries, Inc. Weirton Medical Center Wheeling Nisshin, Inc. Pikeview Nursery & Garden Center/ WesBanco/Drovers Inn Restaurant/ Mason's Hairstyling West Liberty State College WesBanco Convenient Food Mart WesBanco Eagle Manufacturing Co.
Hooverson Heights Primary Jefferson Primary L. B. Millsop Primary Wellsburg Primary Wellsburg Middle	
CABELL COUNTY	
Altizer Elementary Barboursville Elementary Barboursville High Barboursville Middle Beverly Hills Middle Cabell County Vocational Ctr. Cammack Elementary Cammack Middle Cox Landing Elementary Cox Landing Middle Culloden Elementary Davis Creek Elementary Enslow Middle Geneva-Kent Elementary Guyandotte Elementary Highlawn Elementary	Hardee's Sturm Machine Bank One-Huntington, Guyan Branch Bank One-Huntington, Guyan Branch Commerce Bank Clark's Auto Center One Valley Bank/Strictly Business Cabell-Huntington Hospital Joseph Thompson, Orthodontist Tradewell Supermarket Standard Food Service Co. Inc. Setzer's World of Camping State Electric Supply Co. Huntington Chapter, C&P Pioneers VFW Post 9738 Twentieth Street Bank/ Chapman Printing Wooten Machine Company Commerce Bank Bank One-Huntington Bank One-Huntington Kroger Company/ Huntington Chapter, C&P Pioneers Tower Food Fair Huntington Federal Savings & Loan One Valley Bank
Hite-Saunders Elementary Huntington East High Huntington High Jefferson Elementary Johnston Elementary	
Martha Elementary Meadows Elementary Miller Elementary	



Partnerships in Education

SCHOOL	BUSINESS
Milton High	Twentieth Street Bank, Milton Branch/ Bank One-Huntington, Milton Branch IBM/Steel of West Virginia Chick-Fil-A General Refuse Company Wetterau, Inc.-WV Division Twentieth Street Bank/Hardee's BASF Corporation Twentieth Street Bank, West Hamlin Branch St. Mary's Hospital/ HCA River Park Hospital Bank One-Huntington
Monroe Elementary Nichols Elementary Ona Elementary Ona Middle Pea Ridge Elementary Peyton Elementary Salt Rock Elem/Middle	
Spring Hill Elementary	
West Middle	
CALHOUN COUNTY	
Arnoldsburg School Calhoun County High Minnora School Pleasant Hill School	WVRC Radio B.F. Goodrich Company Calhoun County Bank Calhoun General Hospital
CLAY COUNTY	
Clay County High Clay Elementary Clay Jr. High H.E. White Elementary Ivydale Elementary Lizemore Elementary Valley Fork Elementary	Clay County Bank Clay Foodland Gino's Pizza Kopper Kettle Restaurant Telford's Chevrolet Lizemore Home Center Columbia Gas Company
DODDRIDGE COUNTY	
Doddridge County High	CNG Transmission Corp.
FAYETTE COUNTY	
Ansted Elementary Ansted Middle	New River Foodland North American River Runners/ United Bank-Ansted Branch Elliott's Restaurant Fayette Plateau Medical Ctr. Babcock State Park Meadow River Coal Company Montgomery General Hospital Fayette County Chamber of Commerce First Empire Federal Savings & Loan Fayette County National Bank Holiday Inn of Oak Hill Media Productions/ Fayette County National Bank Reba Trucking Co. Elkem Metals Merchants National Bank- Gauley Bridge Branch One Stop - Glen Jean/ Woods Pharmacy Meadow Bridge Kiwanis Club Rainelle Foodland/ First State Bank & Trust Gauley Sales and Service C&P Telephone Company of WV American Canadian Expeditions Appalachian Power Company Bank of Mount Hope Hawk's Nest State Park
Beckwith Elementary Collins Middle Danese Elementary Divide Elementary Falls View Elementary Fayette-Plateau Vo-Tech Ctr.	
Fayetteville Elementary	
Fayetteville High Fayetteville Middle Gatewood Elementary	
Gauley Bridge Elementary Gauley Bridge High Gauley Bridge Middle	
Glen Jean Elementary	
Meadow Bridge Elementary Meadow Bridge High	
Midland Trail High Montgomery Middle Mount Hope Elementary Mount Hope High Mount Hope Middle Nuttall Middle	

SCHOOL	BUSINESS
Oak Hill East End Elementary Oak Hill Elementary Oak Hill High Oakville Special Education Page Elementary	Golden Corral Bank One-Oak Hill One Valley Bank Oak Hill Civitan Club Pick-Up/ Appalachian Power Company Kelly's Korner Cyprus Kanawha Corporation Kroger Company Oak Hill Foodland/ Long-Airdox Co. Montgomery National Bank Elkem Metals/McDonald's
Pax Elementary Powellton Elementary Rosedale Elementary Scarbro Elementary	
Valley Elementary Valley High	
GILMER COUNTY	
Gilmer County High	United National Bank/ WACO Oil & Gas/ Glenville Pizza Hut Glenville Foodland/ Glenville Americare Continental Petroleum Bonanza Steak House/ Flying W. Plastics/ Wendclark Corporation/ Glenville Foodland
Glenville Elementary	
Sand Fork Elementary Troy Elementary	
GRANT COUNTY	
Dorcas Elementary Maysville Elementary	Grant County Hospital Grant County Hospital/ Fairfax Sand & Stone/ Grant County Mulch, Inc. Potomac Valley Bank Grant County Bank N.B. Partners, Ltd. Virginia Electric Power Co.
Petersburg Elementary Petersburg High Union Elementary Union High	
GREENBRIER COUNTY	
Alderson Elementary Crichton Elementary/Jr. High Eastern Greenbrier Jr. High	Greenbrier Valley National Bank Appalachian Power Company Federal Correctional Institution/ First National Bank in Ronceverte/ ABB Process Analytics/ C&P Telephone Company of WV/ British United Turkeys of America The Greenbrier Westvaco Corporation Greenbrier Valley National Bank/ Humana Hospital-Greenbrier Valley/ Greenbrier Physicians/ Greenbrier Respiratory Care Heartland of Rainelle One Valley Bank Greenbrier Valley National Bank O'Dell's Greenhouse Bank of White Sulphur Springs British United Turkeys of America/ W.W. Boxley Co.-Greenbrier Limestone
Greenbrier East High Greenbrier West High Lewisburg Elementary	
Rainelle Elementary/Jr. High Ronceverte Elementary Rupert Elementary/Jr. High Smoot Elementary/Jr. High White Sulphur Springs Elementary Williamsburg Elementary	
HAMPSHIRE COUNTY	
Augusta Elementary Capon Bridge Elementary Capon Bridge Jr. High	Potomac Edison Company First National Bank of Romney A.B.A.T.E./Capon Valley Market/ The Bank of Romney



Partnerships in Education

SCHOOL

Grassy Lick Elementary
Hampshire High

John J. Cornwell Elementary
Romney Elementary
Romney Jr. High
Slanesville Elementary
Springfield-GreenSpring Elementary

HANCOCK COUNTY

A.T. Allison Elementary
Broadview Elementary
Jefferson Elementary
Liberty Elementary
Marland Heights Elementary

New Cumberland Elementary

New Manchester Elementary
Oak Glen High

Oak Glen Middle
Weir High
Weir Middle
Weirton Heights Elementary

HARDY COUNTY

Moorefield Elementary
Moorefield High

HARRISON COUNTY

Adamston Elementary
Bridgeport High
Bridgeport Jr. High
Gore Jr. High
Harden Elementary
Johnson Elementary
Liberty High
Lincoln High

Lost Creek Elementary
Lumberport Elementary
Lumberport Middle
Morgan Elementary
North View Elementary
Norwood Elementary

Clarksburg-NutterFort Elementary
Roosevelt-Wilson Jr. High
Salem Jr. High
Simpson Elementary
South Harrison High
Summit Park Elementary
Tri-County High
United Career Center
Van Home Elementary
Washington Irving High
West Milford Elementary
Wilsonburg Elementary

BUSINESS

Mayhew Chevrolet-Oldsmobile/
Hampshire Gas
The Hampshire Review/
Domino's Pizza/
Hampshire County Chamber of
Commerce
Koppers Industries
First National Bank of Romney
GTE South/Coca-Cola
West Virginia Farm Credit
Hampshire Manufacturing Inc.

National Church Supply Company
Hancock County Savings Bank
Northern Hancock Bank & Trust
Monongahela Power Co.
Steel Works Community
Federal Credit Union
Steel Works Community
Federal Credit Union
New Manchester Center
Quaker State Oil Refining
Corporation
Hancock County Savings Bank
U.S. Can Company
Bank of Weirton
United National Bank

Hester Industries
American Woodmark Corp.

J.C. Penney Company
WDTV-TV
Hope Gas, Inc.
Bank One-Clarksburg
Hartland Building Supply Center
Harry Green Chevrolet, Inc.
United Hospital Center
Harrison Co. Sheriff's Office/
Harrison Power Station
Kroger Company
CB & T of Shinnston
Erwin Supply Company
K-Mart Discount Department Store
Louis B. Johnson Medical Center
K.C.I. Aviation/
Bridgeport Hardee's/
Honor Brothers Engineering
Foodland of Nutter Fort
Monongahela Power Co.
Salem-Teikyo University
Wal-Mart
Harrison County Bank
CB & T of Clarksburg
FirstBank
Holiday Inn of Clarksburg-Bridgeport
Empire National Bank
C&P Telephone Company of WV
CNG Transmission Corp.
Kroger Company

SCHOOL

JACKSON COUNTY

Cottageville Elementary
Evans Elementary
Fairplain Elementary
Gilmore Elementary
Henry J. Kaiser Elementary
Kenna Elementary
Ravenswood Grade
Ravenswood High
Ravenswood Middle

Ripley Elementary
Ripley High

Ripley Middle

Roane Jackson Technical Ctr.

JEFFERSON COUNTY

Blue Ridge Elementary
C.W. Shipley Elementary

Charles Town Jr. High
Harpers Ferry Jr. High

Jefferson High
North Jefferson Elementary
Page Jackson Primary
Ranson Elementary

Shepherdstown Elementary

Shepherdstown Jr. High
South Jefferson Elementary
Wright Denny Intermediate

KANAWHA COUNTY

Alban Elementary
Alum Creek Elementary

Andrew Heights Elementary

Andrew Jackson Middle

Anne Bailey Elementary
Belle Elementary
Belvil Elementary
Ben Franklin Career Tech. Ctr.

Bonham Elementary
Central Elementary
Chamberlain Elementary

Chandler Elementary

*Charleston Catholic High
Chelyan Elementary
Chesapeake Elementary
Clendenin Elementary
Clendenin Middle

BUSINESS

Appalachian Power Company
One Valley Bank
Appalachian Log Structures
Carl Smith Construction
Ravenswood Aluminum Corp.
Jackson General Hospital
Jackson County Bank
C&P Telephone Company of WV
Hartley Industries/SDR Plastics/
Carl Smith, Inc./Copes Super Market
Kroger Company
United National Bank/
Bowles, Rice, McDavid, Graff & Love/
Pepsi-Cola Company
Hardman's Home Center/
Dickirson, LTD
Ravenswood Aluminum Corp.

Blakeley Bank & Trust Co.
Bank of Charles Town,
Harpers Ferry Branch/
Shenandoah Kiwanis Breakfast Club
Jefferson County Chamber of Commerce
Community Oil/
Halltown Paper Company
Bank of Charles Town/Domino's Pizza
CR TV Cable
Shenandoah Federal Savings Bank
Old National Bank/
Whitmore Lumber Company/
Shenandoah Kiwanis Breakfast Club
Jefferson Security Bank/
Greentree Realty/
Specialty Binding & Printing Co.
Jefferson Security Bank
Bank One-Charles Town
Supertane Gas Corporation

Citizens National Bank of St. Albans
Joe Holland Chevrolet/
Harley-Davidson Kawasaki of WV, Inc
City of St. Albans/
National Learning Products
Union Carbide Corporation-Institute/
Bob Evans Farms Restaurant-Cross Lanes
Jefferds Corporation
Occidental Chemical Corp.
WSAZ TV/MTI Corporation
Kanawha Valley Labor Council/
MTI Corporation
PSI - Process Supply
Value City
G.L. Austin & Company/
Eastern American Energy Corp.
Prudential-Bache Securities, Inc./
Bowles, Rice, McDavid, Graff & Love
St. Francis Hospital
Donaldson Mining Co.
WCHS-TV/Carbon Fuel Company
Bank One-Charleston
Kroger Company

Partnerships in Education

SCHOOL

Cross Lanes Elementary

DuPont High
DuPont Jr. High
Dunbar Jr. High
East Bank High
East Bank Jr. High

Edison Elementary
Elkview Elementary Center

Elkview Middle
Fairview Elementary
Flinn Elementary
Ford Elementary
George C. Weimer Elementary
George Washington High
Glenwood Elementary

Grandview Elementary
Hayes Jr. High
Herbert Hoover High
High Lawn Elementary
Holz Elementary

Horace Mann Jr. High

J.E. Robins Elementary
John Adams Jr. High
Kanawha City Elementary
Kanawha Home for Children
Kenna Elementary
Lakewood Elementary
Malden Elementary

Marmet Elementary
Mary Ingles Elementary

McKinley Jr. High
Midland Trail Elementary
Midway Elementary

Montrose Elementary
Mound Elementary
Nitro Elementary

Nitro High
Oakwood Elementary
Overbrook Elementary

Piedmont Elementary

Pinch Elementary

Point Harmony Elementary
Pratt Elementary
Rand Elementary

Richmond Elementary
Roosevelt Jr. High

BUSINESS

Dairy Queen of Cross Lanes/
ERM-Midwest Corporation
E. I. DuPont de Nemours Co.
E. I. DuPont de Nemours Co.
Rhône-Poulenc AG Company
Mountain State Blue Cross/Blue Shield
Mountain State Blue Cross/Blue Shield/
Turnpike Ford
Kroger Company/Challenge 2000
Elk Valley Community Woman's Club/
Bank One-Charleston/
K-Mart Discount Stores/
Shawnee Lions Club
C&P Telephone Company of WV
Kroger Company
West Virginia-American Water Co.
McDonald's of Dunbar
Olin Corporation
One Valley Bank
Pilot Club of Greater Kanawha Valley/
WV Board of Investments
Royal Oldsmobile-Jeep Eagle Co.
St. Albans Rotary Club
University of Charleston
One Valley Bank
Merrill, Lynch, Pierce, Fenner & Smith/
Eastern Associated Coal Corp.
McDonough-Caperton Insurance Group/
Ponderosa Steak House-Kanawha City
Charleston House Holiday Inn
Process Strategies Institute
United National Bank-Dunbar
NASA Towing & Recovery Service
Charleston Marriott Hotel
Braley & Thompson, Inc.
Good Living Retirement Homes/
Commerce Bank/
Tri-State Roofing & Sheet Metal
West Virginia Supreme Court of Appeals
Bob Evans Farms Restaurants,

Kanawha City/Imprinting by Mary/
Charleston Job Services
Covert & King LC
Kroger Company
Jones Business Machines, Inc./
Catenary Coal Co.
One Valley Bank
Precision Pump & Valve Service, Inc.
Casto Hardware/City of Nitro/
Commerce Bank/NAPA
FMC Corporation-Nitro
Bank One-Charleston
South Hills Bank/
Eastern Associated Coal Corp./
Schuman, Annand & Poe/
Wheat First Securities
Evergreen Federal Savings Bank/
Kroger Company/Jackson & Kelley
Elk Valley Community Woman's Club/
United National Bank
Commerce Bank
Robinson & McElwee
B.W. Painter, Inc.-Kentucky Fried Chicken/
Catterton Group
The Upper Cut
McJunkin Corporation

SCHOOL

Roxalana Elementary

Ruffner Elementary
Ruthlawn Elementary
*Sacred Heart Elementary

Sharon Dawes Elementary

Shawnee Community Education Ctr.
Shoals Elementary
Sissonville Elementary
Sissonville High

Sissonville Middle
South Charleston High

South Charleston Jr. High
Spring Hill Elementary Center

*St. Agnes Grade
St. Albans High
*St. Anthony Grade
Staunton Elementary

Stonewall Jackson Jr. High

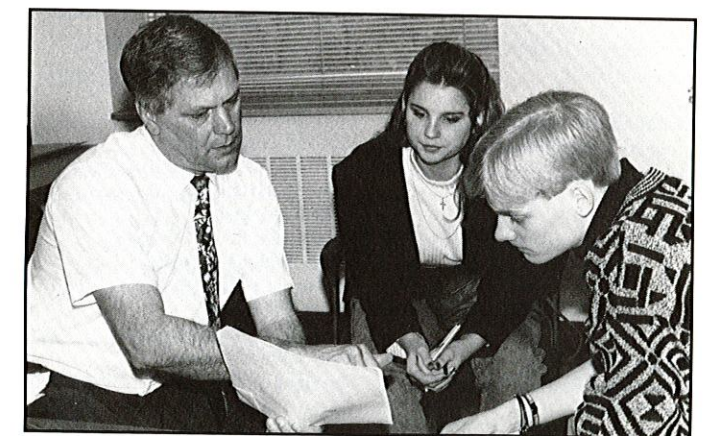
Taft Elementary

Tiskelwah Elementary

Tyler Elementary
Valley Grove Elementary
Watts Elementary
Weberwood Elementary

BUSINESS

John Hancock Mutual Life Insurance/
United National Bank
Eastern Associated Coal Corp.
Kroger Company
First Empire Federal Savings & Loan/
Eastern Associated Coal Corp.
West Virginia State Bar Assoc./
Catenary Coal Co./
Cecil I. Walker Machinery Co.
C.H. James & Company
West Virginia Hospital Association
Spilman, Thomas, Battle & Klostermeyer
Wesbanco/
C&P Telephone Company of WV
One Valley Bank
Union Carbide Corporation/
City of South Charleston
Union Carbide Corporation
FMC Corporation/
Bob Evans Farms Restaurant-So. Chas./
Womens Club of South Charleston
City National Bank of Charleston
One Valley Bank
City National Bank of Charleston
Herbert J. Thomas Memorial Hospital/
Bowling Sales Corporation
Kay, Casto, Chaney, Love & Wise/
Commerce Bank
Goodwin & Goodwin/
Elk Funeral Home, Inc.
Charleston Department Store/
Campbell, Woods, Bagley, Emerson,
McNeer & Herndon/Kroger Company/
Community Music Association
Strategic Ventures, Inc.
WV Air National Guard 130 TAG-CC
Columbia Gas Transmission Corporation
One Valley Bank



Rex Bartlett (l), forester, discusses Monongahela Power Company's right-of-way maintenance plans with two students from North Marion High School during a partnership "Shadow Day."



Partnerships in Education

SCHOOL BUSINESS

LEWIS COUNTY

Alum Bridge Elementary
Jane Lew School
Lewis County High
Peterson Elementary
Polk Creek Elementary
Roanoke Elementary
Robert L. Bland Middle

Shadybrook Primary
Weston Central Elementary

LINCOLN COUNTY

Atenville Elementary
Big Ugly Elementary
Branchland Elementary
Charles E. Yeager Career Center
Duval Jr./Senior High
Ferrellsburg Elementary
Griffithsville Elementary

Guyan Valley High
Hamlin Elementary
Hamlin Jr./Senior High
Harts High
Martin Elementary
McCorkle Elementary
Midkiff Elementary
Midway Elementary
Pleasant View Elementary
Ranger Elementary
West Hamlin Elementary
Woodville Elementary

LOGAN COUNTY

Buffalo Elementary
Chapmanville High

Chapmanville Jr. High
Christian Grade

Dehue-Chambers Elementary
Holden Central Elementary
Justice Grade
Lake Grade
Logan Central Jr. High
Logan County Jr. High
Logan Elementary

Logan High

Mallory Elementary
Man High
Man Jr. High
Mill Creek Elementary
Monaville Elementary
Omar Grade

Omar Jr. High

Ralph R. Willis Vo-Tech Center

United National Bank
C&P Telephone Company of WV
Kroger Company
McDonald's of Weston
Bennett's Home and Auto
Wal-Mart/Stop & Shop
Stonewall Jackson Memorial Hospital/
Wendclark Corporation
Mister Donut
CB&T-Stonewall Branch/
Wendclark Corporation

Manns Lumber Company
Hardee's
Columbia Gas Company
Lincoln Primary Care Center
Employers Service Corp.
L. T. Jones
Duval Emergency Service/
United Parcel Service
Resource Marketing, Inc.
Armstrong Telephone Co.
Bank One-Hamlin
Lions Den
Adkins Grocery
Equitable Insurance Company
World Book Encyclopedia
Nationwide Insurance Co.
Hardee's
BASF Corporation
WVU Extension Service
Hobert Mining, Inc.

Buffalo Shopwise/Bonanza
Guyan Machinery/
Bank of Chapmanville
Friendship Inn of Chapmanville
First Empire Federal Savings & Loan/
Pic-Pac
L&S Chevrolet
McGrew Tire Company
Arch of West Virginia
American Hydraulics
Bank One-Logan
Appalachian Power Company
Logan Banking & Trust/
McDonald's of Logan
Guyan Machinery/
Kroger Company/Shoney's
Arch of West Virginia
The Bank of Man
Commerce Bank of Man, Inc.
Mid State Cable & Mine Supply Co.
Bill's Electronics
Pizza Hut of Wilkinson/
Stop-N-Save
Mountain View Fabrication & Repair/
Logan Wholesale Foods
C&P Telephone Company of WV/
Marrowbone Development Co./
Matewan National Bank

SCHOOL BUSINESS

South Man Elementary

Stollings Elementary
Verdunville Elementary
West Chapmanville Grade

MCDOWELL COUNTY

Iaeger Intermediate
Kimball Elementary

War Elementary

MARION COUNTY

Barnes Elementary
Barrackville Elementary/Middle
Blacksheer Elementary
Colfax Elementary
Dunbar Middle
East Dale Elementary
East Fairmont High
East Park Elementary
Fairmont Senior High
Fairview Elementary
Fairview Middle
Jayenne Elementary
Mannington Middle
Marion Vocational-Technical Ctr.
Miller Jr. High
Monongah Elementary
Monongah Middle
North Marion High
Pleasant Valley Elementary
Rivesville Elem/Middle
Watson Elementary
White Hall Elementary

MARSHALL COUNTY

Cameron Elementary
Cameron High
Center McMechen Elementary

Central Elementary
Glen Dale Elementary
John Marshall High
Limestone Elementary
McNinch Elementary
Moundsville Jr. High
*Our Lady of Peace
Park View Elementary
Sand Hill Elementary
Sanford Elementary
Sherrard Elementary

Sherrard Jr. High
*St. Francis Xavier
Union Jr. High
Washington Lands Elementary

MASON COUNTY

Ashton Elementary
Beale Elementary
Central Elementary
Hannan High

Omni Electronics/
Commerce Bank of Man, Inc.
Pepsi-Cola Bottling Company
M & S Hydraulics
Guyandotte Voice

Virginia Crews Coal Co.
West Virginia Grocery/
Jim's Radio & TV Telescrip
Cable Company
Western Auto/D&D Plant Company

Community Foodland
Middletown Tractor
Eastern Associated Coal Corp.
Eastern Associated Coal Corp.
Marion County Parks & Recreation
WTCS Radio
C&P Telephone Company of WV
Community Foodland
Monongahela Power Co.
Marion County Libraries
Bank of Wadestown
First National Bank
First Exchange Bank of Mannington
EIMCO
Community Bank & Trust
Fairmont Federal Credit Union
Fairmont General Hospital
Monongahela Power Co.
Ford Funeral Home
DeGarmo Funeral Home
City National Bank
Tygart Valley Foodland/Sam's Club

Alltel Corporation
First National Bank
Bank of McMechen/
Oralco Mfg. Services, Inc.
Kelch's Shop & Save
Reynolds Memorial Hospital
PPG Industries
United National Bank
Fed One
Mercantile Banking & Trust Co.
Wheeling Hospital
Moundview Health Care, Inc.
Dallas Lions Club/Quality Stores
Varsity Pizzeria/Wendy's
Black's Nursery/
Dr. C. Keith Hieronimus, DDS
Wheeling Electric
Remke Furniture & Appliance Showcase
Woodruff Studios
One Valley Bank/Coast Guard

Save a Lot/M&M Medical Supplies
AKZO Chemicals
Point Pleasant Hardware
INCO Alloys International Inc.

Partnerships in Education

SCHOOL BUSINESS

Leon Elementary

Mason County Vo-Tech Ctr.
Mason Elementary

New Haven Elementary
North Point Pleasant Elementary
Ordnance Elementary
Point Pleasant High
Point Pleasant Jr. High
Roosevelt Elementary
Wahama High

MERCER COUNTY

Athens Elementary
Athens High
Bluefield High
Bluefield Jr. High
Bluewell Elementary
Bramwell School
Brushfork Elementary
Ceres Elementary
Cumberland Heights Elementary
Glenwood Elementary
Glenwood Jr. High
Knob Elementary
Lashmeet Elementary
Matoaka High
Melrose Elementary
Memorial Elementary
Mercer County Vocational Ctr.
Mercer Elementary
Montcalm Elementary
Montcalm High
Oakvale Elementary
Oakvale High
Princeton Jr. High
Princeton Senior High
Ramsey Elementary
Silver Springs Elementary
Spanishburg Elementary
Spanishburg High
Straley Elementary
Sun Valley Elementary
Wade Elementary

MINERAL COUNTY

Burlington Primary
Clary Street Learning Center
Elk Garden School
Fort Ashby Primary
Keyser High
Keyser Primary/Middle
New Creek Primary

MINGO COUNTY

Cline Grade
Dingess Elementary
Matewan High
Matewan Jr. High
Tug Valley High
Williamson Jr. High

Town of Leon/
Buffalo Exxon Service Center
West Point Fabrication
Westmoreland Family Care Center/
Mason Market
Appalachian Power Company
Peoples Bank
Pleasant Valley Hospital
Goodyear Tire & Rubber Co.
Bank One-Point Pleasant
Kroger Company
People's Bank

Shoney's/One Valley Bank
Concord College
Bluefield Community Hospital
First National Bank
Bluewell Elementary
Map Co Corporation
Flat Top National Bank
Dove Signs
Leggett's
Compton Construction Co.
Glenwood Park United Methodist Home
Princeton TeleCable
City of Princeton/OH-9
State Electric
One Valley Bank
Consolidation Coal Company
Aircor
Princeton Community Hospital
Hill's Department Store
Bluefield Daily Telegraph
First Community Bank
First Community Bank
GTE
WVVA-TV
TCI Office Products
Dean Company
U.S. Forest Products Laboratory
First National Bank
Chick-Fil-A
One Valley Bank
Appalachian Power Company

First United Bank of West Virginia
Anchor Glass
Automated Packaging
National Bank of Keyser
National Bank of Keyser
Potomac State College/McDonald's
New Creek Volunteer Fire Dept.

Sammons Surveying
Marrowbone Development Co.
Matewan National Bank
Matewan National Bank
Marrowbone Development Co.
Appalachian Power Company



SCHOOL BUSINESS

MONONGALIA COUNTY

Arnettsville Elementary
Blacksville Elementary
Brookhaven Primary
Central Elementary
Cheat Lake Elementary/Middle
Clay-Battelle High
Cool Springs Elementary
Daybrook Elementary
Dorsey Primary
Easton Elementary
First Ward Elementary
Goff Kindergarden
Jakes Run Elementary
Jerome Park Elementary
Cass Elementary
Monongalia County Technical
Morgan Heights Primary
Morgantown High
National Waitman Barbe
North Elementary
Ridgedale Elementary
Riverside Elementary
Sabraton Elementary
Second Ward Elementary
South Jr. High
Summers Elementary
Suncrest Primary
Suncrest Jr. High
University High
Wadestown Elementary
Waitman Barbe Elementary
Westover Elementary
Westover Middle
Wiles Hill Elementary
Woodburn Elementary
Woodland Primary

MONROE COUNTY

Union Elementary
Union High

MORGAN COUNTY

Berkeley Springs High
Great Cacapon Elementary
Greenwood Elementary
North Berkeley Primary
Paw Paw Elementary
Paw Paw High
Pleasant View Elementary
Widmyer Elementary

NICHOLAS COUNTY

Beaver Elementary
Birch River Elementary
Canvas Elementary

Cherry River Elementary
Craigsville Elementary
Dixie Elementary

Glade Creek Elementary
Leivasy Elementary

Winners Choice
First National Bank of Morgantown
Mon General
First Empire Federal
General Paving Company
First National Bank of Morgantown
WNPB-TV
Chisler Contracting
Southern States Cooperative
The Insurance Center
Citizens Industrial Financing Corp.
WVU Mountainlair
WVU Student Bar Association
McDonald's of Sabraton
McCoy 6 Apartments
Sterling Faucet Company
Chic-Fil-A
Monongahela Power Co.
C&P Telephone Company
GE Specialties
National Bank of West Virginia
West Virginia University Hospitals
McDonald's of Sabraton
Community Bank & Trust
One Valley Bank
IBM
First National Bank of Morgantown
Mylan Pharmaceuticals
First National Bank of Morgantown
First National Bank
C&P Telephone Company of WV
Chic-Fil-A
EG&G Technical Service West Virginia
Pierpont House Apartments
Central National Bank
The Insurance Center

Ashley's IGA
B.F. Goodrich

Citizens National Bank
Great Cacapon Post Office
Fleetwood Travel Trailers of Maryland
Eddie's Tire Service
Bonni Kay Industries
Bonni Kay Industries
Coolfont Resort & Conference Center
U.S. Silica

Columbia West Virginia Corp.
GoMart
Vandalia Mining Company/
McDonald's
Georgia-Pacific
Craigsville Foodland
Elswick Lumber Company/
Merchants National Bank-GB Branch/
Montgomery Elderly Care
First Community Bank
First Community Bank



Partnerships in Education

SCHOOL	BUSINESS
Mt. Lookout Elementary Mt. Nebo Elementary Muddlety Elementary Nicholas County High	Wal-Mart Summersville Memorial Hospital Wendy's One Valley Bank/ Northside Development Co. C&P Telephone Company of WV Donaldson's Food Center Inc./ Pizza Hut
Nicholas County Vo-Tech Ctr. Richwood Jr. High	Halstead's Foodland Nicholas County Bank Lowe's Home Centers, Inc.
Summersville Elementary Summersville Jr. High Zela Elementary	
OHIO COUNTY	
Bethlehem Elementary	Wheeling Hospital/ TCI of Wheeling, Inc Wheeling Park Commission WV Northern Community College/ WesBanco-Wheeling
Bridge Street Middle Clay Primary	Wheeling National Bank United National Bank/ Preferred Health Plan Wheeling Intelligencer, Wheeling News Register, Sunday News Register/ Touchstone Research Laboratory/ Florence Crittenton Home and Services
Elm Grove Elementary Madison Elementary	SQUIBB MANSUETTO Advertising-Public Relations/ Wheeling Fire Department Ohio Valley Medical Center/ WWVA Jamboree USA/ WesBanco-Wheeling
Middle Creek Elementary	Wheeling Hospital/ Wheeling Jesuit College/ Bob Evans Restaurant, Store #230 Hazlett, Burt and Watson Bank One-Wheeling First West Virginia Bank of Warwood/ Home For Men C&P Telephone Company of WV West Liberty State College/ Windsor Coal Company Wheeling Electric/ Cooey-Bentz Company Stone & Thomas/ Horne's of Wheeling/ Wheeling Civic Center/ Fed One Savings Bank First West Virginia Bank/ WTRF-TV7
North Park Primary	
Ritchie Elementary	
Steenrod Elementary	
Steenrod/Park View Campus Triadelphia Middle Warwood Elementary	
Warwood Middle West Liberty Elementary	
Wheeling Middle	
Wheeling Park High	
Woodsdale Elementary	
PENDLETON COUNTY	
Circleville School Franklin Elementary Franklin High	Hanover Shoe Company Pendleton Co. Nursing Home Hanover Shoe Company
PLEASANTS COUNTY	
Belmont Elementary PRT Vo-Tech Center Pleasants County Middle St. Marys Elementary St. Marys High	Pleasants Power Station Sistersville Tank Works GTE First National Bank of St. Marys American Cyanamid

SCHOOL	BUSINESS
POCAHONTAS COUNTY	
Greenbank Elementary/Middle Hillsboro Elementary/Middle Marlinton Elementary Marlinton Middle Pocahontas County High	Snowshoe Bank of Marlinton Burns Motor Freight, Inc. First National Bank of Marlinton Pocahontas Forestry Advisory Council
PRESTON COUNTY	
Bruceton Elementary Preston High Newburg Elementary Preston Educational Center Valley Elementary	Bruceton Bank One Valley Bank Morgan's Foodland Preston Memorial Hospital GE Specialties
PUTNAM COUNTY	
Buffalo Elementary Confidence Elementary Conner Street Elementary Eastbrook Elementary Hometown Elementary Hurricane High Hurricane Middle Hurricane Town Elementary Poca High Poca Middle Rock Branch Elementary Scott-Teays Elementary West Teays Elementary Winfield Elementary	Gino's Pizza Marshall University Quorum Eye Tech/SDA Computers Edcon Food Management Service, Inc. One Valley Bank WVAH Channel 11/MTI Corporation McDonald's of Hurricane Union Boiler Tri-State Home Center Town & Country Supply Putnam General Hospital United National Bank Eye Physicians & Surgeons/ Buffalo Bank C&P Telephone Company of WV IBM Corporation
Winfield High Winfield Middle	
RALEIGH COUNTY	
Beaver Elementary Beckley Jr. High Bradley Elementary Central Elementary	USDA Soil & Water Research Laboratory United National Bank Wal-Mart Harvey's Fashions/ Appalachian Power Company/ City of Beckley Sears Eddie's IGA Appalachian Power Company Phillips Machine Service Capt. D's Seafood Restaurant WJLS Radio C&P Telephone Company of WV Kroger Company Kroger Company Beckley Telecable/ First National Bank of Beckley Shoney's, Inc. Maple Meadow Mining Bob Evans Farms Restaurant Whitesville State Bank Raleigh County Sheriff's Dept New Winterplace Ski Resort Stone & Thomas/ Bob Evans Farms Restaurant Veterans Administration Medical Center Eastern Associated Coal Corp. Bank of Raleigh Beckley Newspapers, Inc. Hardee's
Clear Fork District Elementary Coal City Elementary Crab Orchard Elementary Crescent Elementary Daniels Elementary Fairdale Elementary Ghent Elementary Hollywood Elementary Independence High Institute Elementary	
Lester Elementary Liberty High Mabscott Elementary Marsh Fork High Marsh Fork Middle	
Maxwell Hill Elementary	
New Academic School Mt. View Elementary Park Jr. High Pettus Elementary Piney Oaks Early Childhood Ctr.	



Partnerships in Education

SCHOOL	BUSINESS
Piney View Elementary Raleigh County Vo-Tech Center Shady Spring Elementary Shady Spring High Shady Spring Jr. High Sophia Jr. High Sophia-Soak Creek Elementary *St. Francis deSales Stoco Jr. High Stratton Jr. High Sylvia Elementary Trap Hill Middle	Beckley Appalachian Regional Hospital Mountaineer Acura K-Mart National Mine Health & Safety Academy Kroger Company Gulf National Bank Bob Evans Farms Restaurant College of West Virginia Klaus Office Equipment Co. 7-Up/Dr Pepper Bottling Co. Toney's Branch Coal Co. Whitesville State Bank-Glen Daniel Branch/Rick's Super Market Beckley Hylton Hotel
Woodrow Wilson High	
RANDOLPH COUNTY	
Beverly Elementary Elkins Middle	Mountaineer Motor Sales Davis Memorial Hospital/ Wendclark Corporation C&P Telephone Company of WV/ First State Bank/ Coca-Cola Bottling Company Consolidated of Elkins Bank of Mill Creek Hardee's of Elkins Mongold Lumber Company Citizens National Bank J.F. Allen Company McDonald's of Elkins/ Brown's Family Hess Oil Co., Inc./ Teter Motors/Giles Distributor Mountaineers for Rural Progress Monongahela Power Co. Nella's Nursing Home/ Wendclark Corporation/ Davis Trust Bank Tygarts Valley Lions Club Phoenix Resources
Forest Hills High	
George Ward Elementary Harman School Homestead Elementary Jennings Randolph Elementary Midland Elementary North Elementary	
Pickens School Randolph County Vo-Tech Ctr. Third Ward Elementary	
Tygarts Valley High Valley Head Elementary	
RITCHIE COUNTY	
Cairo Elementary/Middle	Farmers & Merchants Bank of Ritchie County Community Bank/ Simonton Building Products Bob Yoak Ford Union Bank of Harrisville Simonton Building Products Troy Mills/Mountaineer Bulk Services Alfab, Inc.
Creed Collins Elementary	
Ellenboro Elementary Harrisville Primary Pennsboro Middle Ritchie County High Smithville Elementary	
ROANE COUNTY	
Geary Elementary Reedy Elementary Roane County High Spencer Middle	WVRC Radio Burke-Parsons-Bowlby Corp. Rotary Club of Spencer Casto & Harris/Traders Bank/ Cooper's Flowers & Gifts/ First National Bank of Spencer/ WCKA FM-WSGB AM Hardman's Home Center/ Roane General Hospital/ Bowers, Inc. Kellwood Company Poca Valley Bank/ Spencer Newspapers
Spencer Primary Center	
Walton Elementary Walton Middle	

SCHOOL	BUSINESS
SUMMERS COUNTY	
Hinton Area Elementary	City of Hinton/WMTD/ National Park Service/ First National Bank of Hinton/ National Bank of Summers Kroger Company Pizza Hut/OH-9 Ambulance Service State Farm Insurance/ Phillip Gwinn Construction/Boyd's Store Glade Springs Resort Pizza Hut/Dillion's Superette/ Pipestem Ruritan Club/ Pipestem Fire Department/ R. T. Rogers Oil Company/ Massey Insurance
Hinton Jr. High Pipestem Elementary Sandstone Elementary	
Summers Co. Career Center Talcott Jr. High	
TAYLOR COUNTY	
Anna Jarvis Elementary Flemington Elementary Grafton High Hepzibah Elementary	Grafton Manufactured Housing Mountaineer Greenhouse Empire National Bank Pryor's Handi Mart/ Stickley's Construction First Community Bank Pruntytown Correctional Facility Economic Development Association
Taylor County Middle Pruntytown Elementary Taylor County Vocational Ctr.	
TUCKER COUNTY	
Arch Moore Career Center Davis-Thomas Elementary/Middle Hamrick Elementary Parsons Elementary Tucker County High	Courtland Acres Nursing Home Canaan Valley Resort U.S. Forest Service Parsons Advocate Courtland Acres Nursing Home



Fahlgren-Martin, a Parkersburg advertising agency, is helping the students at Lincoln Elementary School learn how to produce a videotape presentation.



Partnerships in Education

SCHOOL

BUSINESS

TYLER COUNTY

Arthur I. Boreman Elementary
Sistersville Elementary
Tyler Consolidated High

Prunty's Pharmacy
Marble King, Inc.
Witschey's Shop N' Save

UPSHUR COUNTY

Academy Primary
Buckhannon-Upshur High

Triax Cable
Bank One-Buckhannon/
Alderson Broaddus College
First West Virginia Bank
ALCON/

Buckhannon-Upshur Intermediate
Buckhannon-Upshur Middle

Moore Business Forms/
Wendclark Corporation/
Hunter, Law & Levine
The Bookstore/
Kanawha Services
West Virginia Wesleyan College
Coastal Lumber/
St. Joseph's Hospital
Foodland
Ralph Harper Lumber
Corhart Refractories
Wendclark Corporation/
Eastern American Energy
Shop N Go Marts

Central Elementary

French Creek Elementary
Hodgesville Elementary

Main Street Primary
Rock Cave Elementary
Tennerton Elementary
Union Elementary

Washington District Elementary

WAYNE COUNTY

Buffalo Elementary
Buffalo Middle
Buffalo High

Nabisco
Appalachian Power Company
Chapman Printing/
Commerce Bank
Ashland Oil, Inc.
Western Mingo Mining Co.
Marrowbone Development Co.
Bank One-Wayne
Commerce Bank
Marrowbone Development Co.
Ashland Oil, Inc.

Ceredo-Kenova High
Crum Elementary
Dunlow Elementary
Genoa Elementary
Lavalette Elementary
Tolsia High
Wayne High

WEBSTER COUNTY

Diana Elementary
Glade Elementary
Webster Springs Elementary

J&L Logging
First Community Bank
United National Bank

WETZEL COUNTY

Hundred High
Long Drain Elementary
Magnolia High
New Martinsville

Alltel
Bank of Hundred
Miles Corporation, Inc.
PPG Industries/
First National Bank of New Martinsville
Wetzel County Hospital
PPG Industries
New Martinsville Bank, Pine Grove Branch
CNG Transmission Corp.

Paden City Elementary
Paden City High
Short Line Elementary/Middle
Valley High

WIRT COUNTY

Wirt County High
Wirt County Middle
Wirt County Primary Center

Westvaco Corporation
Busch Funeral Home
Wirt County Bank/
Mazes Cardinal Market

WOOD COUNTY

Beechwood TREK Center

WKYG-WXKX Radio

SCHOOL

BUSINESS

Blennerhassett Elementary

One Valley Bank/
Wal-Mart
Hope Gas, Inc.
Storck Baking Company
Johnston, Leach, McDonough and Eddy
C&P Telephone Company of WV
Commerce Bank-Parkersburg
AB Chance

Blennerhassett Jr. High
Criss Elementary
*DeSales Heights Academy
Edison Jr. High
Emerson Elementary
Fairplains Elementary
Gihon Elementary
Greenmont Elementary
Hamilton Jr. High
Jackson Jr. High
Jefferson Elementary Center

WesBanco Bank-Parkersburg
United National Bank
Ames Lawn & Garden Tools
Shell Chemical Company
Monongahela Power Co./
IBM/Camden-Clark Hospital
Tri-State Roofing
Mister Bee Potato Chips/
Fahlgren Martin
One Valley Bank
Stone & Thomas Department Store
Community Bank/
Bureau of Public Debt
Benson Truck Bodies
Schuller International, Inc. Manufacturing
Division

Kanawha Elementary
Lincoln Elementary

Quick Care
St. Joseph Hospital
E. I. DuPont de Nemours Co.
GE Plastics
Dudley's Florist/
Nashua Photo Products
Commercial Banking & Trust
G.E. Polymerland
Cabot Corporation
Williamstown National Bank
Fenton Art Glass Company
Corning, Inc.
SBR, Inc.

Lubeck Elementary
Madison Elementary
McKinley Elementary

Mineral Wells Elementary
Neale Elementary

*Parkersburg Catholic Elementary
*Parkersburg Catholic High
Parkersburg High
Parkersburg South High
Rayon Elementary

VanDevender Jr. High
Vienna Elementary
Waverly Elementary
Williamstown Elementary
Williamstown Jr. High
Wood County Technical Center
Worthington Elementary

WYOMING COUNTY

Berlin McKinley Elementary
Herndon Consolidated Elementary
Mullens Elementary
Oceana High
Oceana Middle
Pineville High

Eastern Associated Coal Corp.
First Community Bank-Mullens Branch
Peoples Bank of Mullens
First Community Bank-Oceana Branch
Eastern Associated Coal Corp.
First Community Bank-Castle Rock

NOTE: (* indicates a Catholic, private, parochial or other non-public school)

College Bound

The College Bound Program is designed to make students aware that educational opportunities do not end after graduation from high school and to provide students and parents alike with a better understanding of the benefits of attending college or other post-secondary education. Moreover, the program fosters the idea that college is possible for a greater percentage of students in West Virginia.

Created in 1987, the goals of the program are:

- Identifying and lessening financial, attitudinal and other barriers, real or perceived, that affect parents' and students' decisions about college;
- Functioning as a convener around this issue and as a clearinghouse and resource for educators, students, parents, community and business members; and,
- Increasing and enhancing awareness about the changing economic base and promoting realistic avenues for students to prepare successfully for the future.

The College Bound Program in 1993 included the following components:

A Day on Campus

A Day on Campus allows students in grades four through nine to visit a college or university campus in West Virginia to see the available academic and social opportunities at the college level. Visits are organized through the Education Fund, which provides up to one-half the cost of the trip up to \$100 per school each year. Sponsored by Ashland Oil, Inc., more than 30,700 students have participated in the program since 1988. While designed primarily for students, an additional benefit of the program is that it allows parents to participate as chaperones and, therefore, encourages students and parents to learn together about college. Many parents have enrolled in college as a result of their visits with their children.

Scholarship Directory

The Education Fund publishes an annual scholarship directory identifying more than 100 private sector scholarships available to students in West Virginia. The directory helps guide students to available funds to make it possible for more students to attend college. The directory is distributed to state high schools and public and private colleges and universities. Copies are available from the Education Fund upon request.

West Virginia College SORT

This unique computer program contains pertinent information about every college and university in West Virginia. The program facilitates comparisons of various higher education opportunities for students and their parents. A user's guide accompanies the program and includes a section of essential facts students should consider before selecting a college. The program is distributed to high school principals and guidance counselors in West Virginia. College SORT was designed and is updated every two years for the Education Fund by Mr. Joe Lupia of Wheeling Jesuit College.



A group of students from Nitro Elementary School in Kanawha County visited WV State College during "A Day on Campus" fieldtrip. Photo courtesy of Todd Griffith, WVSC



WV Business & Education Alliance

The West Virginia Business & Education Alliance is a unit of the Education Fund and an affiliate of the national Business Roundtable (BRT), which is comprised of the chief executive officers of the nation's 200 largest companies. The BRT has made a 10-year commitment to improving public education. The West Virginia effort is co-chaired by John R. Hall, chairman and CEO of Ashland Oil, Inc., and Dr. E. Linn Draper, chairman and CEO of American Electric Power Company, Inc. Other companies which are members of the West Virginia Business & Education Alliance include Appalachian Power Company, Ashland Coal, Banc One West Virginia Corporation, C&P Telephone Company of West Virginia, CSX Transportation, E.I. DuPont de Nemours & Co., Kmart Corporation, Union Carbide Corporation and United Parcel Service.

The BRT has identified nine essential components of a successful education system, which the Alliance has endorsed and seeks to implement in West Virginia. At the request of Governor Gaston Caperton, the West Virginia Business & Education Alliance's most recent work is an analysis measuring the difference between West Virginia's accomplishments and its state education goals, and which makes recommendations regarding how the goals may be accomplished. Because of the strong similarity between the BRT's nine essential components and the state's education goals, the study not only identifies West Virginia's educational strengths and weaknesses, but also assists in the Alliance's effort to implement the nine essential components.

Mr. David Hornbeck, senior consultant to the BRT and a nationally renowned educational policy architect, and Dr. Gary Payne, an education leader with over 35 years of service in public and higher education, were retained by the Alliance to conduct the study. After months of observational visits, interviews and study of West Virginia's educational laws, policies and practices, the document, entitled *West Virginia Education: Our Children, Our State, Our Future*, was delivered to Governor Caperton. The Alliance expects to work in partnership with the governor, educators, legislative and business leaders and the public to elevate the quality of education in West Virginia by implementing the recommendations of the study.

The Alliance has made progress in its effort to assist local school improvement councils (LSICs) in the past year. LSICs are designed to provide an opportunity for the major stakeholders in education at the local level to be involved in decisions affecting their schools. Councils also have the authority to propose waivers to state policy if an alternative would be more beneficial to the students or more efficient. At least one member of every council is a representative of business or industry.

Throughout West Virginia, the Alliance is assisting local school improvement councils in such efforts as:

- Recruiting and training local business leaders and central school office staff in every county to energize LSICs in their respective counties
- Informing LSICs of the changes in legislation guiding the operations of the councils
- Arranging countywide or individual council meetings and workshops to share ideas and successes and set goals
- Producing a quarterly newsletter, *Forum*, to report LSIC and Alliance activities throughout the state
- Producing public service announcements that have generated great interest in LSICs
- Informing LSICs about the resources and other programs of the West Virginia Education Fund that may be helpful in improving schools
- Working with county school administrators, school boards, and LSICs to recognize and work toward common goals



John Hall (right), chairman and CEO of Ashland Oil, Inc., presents to Governor Gaston Caperton *West Virginia Education: Our Children, Our State, Our Future*.



Read Aloud West Virginia

Read Aloud West Virginia attacks the problem of aliteracy (lack of a desire to read) rather than illiteracy. A program of the Education Fund since 1992, Read Aloud West Virginia is currently established in 30 counties. The program has provided training for 4,000 volunteer readers who are active in 251 schools and in non-school settings such as libraries, day care centers, homeless shelters and early intervention centers. More than 50,000 children are currently affected by this program, which is a simple, active, personalized response to the education achievement challenges in West Virginia.

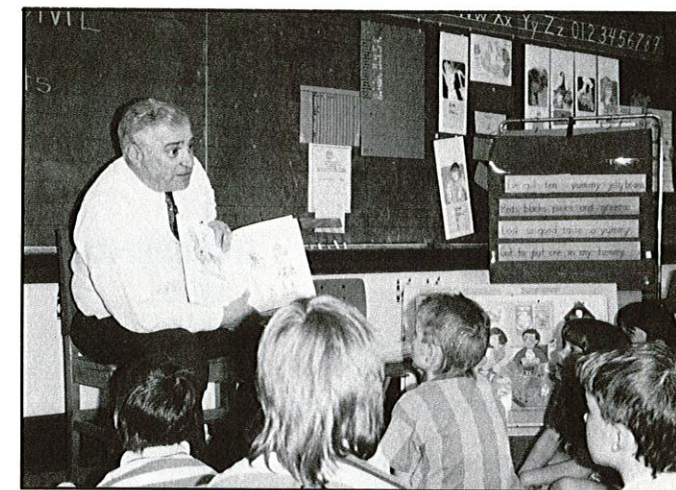
In addition to adding counties to participate in Read Aloud West Virginia, the scope of the program is expanding. Students are being trained to read to younger students, and pre-school children are being served in increasing numbers through new ideas in programming. A brochure, "The Greatest Gifts," encourages positive parenting and lists recommended books for reading to young children. It is being distributed to day care centers, parenting classes and childbirth classes. A number of classroom enrichment programs have been developed by the individual counties and are being shared with other county programs.

The "Readers in Schools" component of the program recruits community volunteers to serve as readers in individual classrooms, before school and in school libraries. Employees of schools' business partners are an excellent source of volunteers. Volunteers are trained and then assigned to specific schools in their communities and work under the direction of classroom teachers, librarians and school principals. With the guidance of school personnel the volunteer readers select books to read aloud for a 20 to 40 minute period. During the reading sessions the children are encouraged to participate in discussions about the stories and characters, and to speculate about the content of the plot. Emphasis is on reading for fun.

Counties where Read Aloud West Virginia has been in operation for a significant period are reporting an increased circulation of children's books, and

an improvement in listening skills, attention span and vocabulary among the children.

Read Aloud West Virginia is funded through a three-year grant from the Claude Worthington Benedum Foundation.



Dr. William Staats, Wood County Superintendent of Schools, reads aloud to a class of first graders at McKinley Elementary School.



Financial Report



Certified Public Accountants

INDEPENDENT AUDITORS' REPORT

The Board of Directors
West Virginia Education Fund, Inc.

We have audited the balance sheet of West Virginia Education Fund, Inc. as of June 30, 1993 and 1992, and the related statements of revenue and support, expenses and changes in fund balance, and changes in cash for the years then ended. These financial statements are the responsibility of the Fund's management. Our responsibility is to express an opinion on these financial statements based on our audit.

We conducted our audit in accordance with generally accepted auditing standards. Those standards require that we plan and perform the audit to obtain reasonable assurance about whether the financial statements are free of material misstatement. An audit includes examining, on a test basis, evidence supporting the amounts and disclosures in the financial statements. An audit also includes assessing the accounting principles used and significant estimates made by management, as well as evaluating the overall financial statement presentation. We believe that our audit provides a reasonable basis for our opinion.

In our opinion, the financial statements referred to above present fairly, in all material respects, the financial position of West Virginia Education Fund, Inc. at June 30, 1993 and 1992, and the results of its operations and changes in cash for the years then ended in conformity with generally accepted accounting principles.

Suttle & Stalnaker

August 9, 1993

1560 Kanawha Boulevard, East • Charleston, West Virginia 25311 • Phone (304) 343-4126 FAX (304) 343-8008

Members of: American Institution of Certified Public Accountants • Private Companies Practice Section • West Virginia Society of Certified Public Accountants



Financial Report

WEST VIRGINIA EDUCATION FUND, INC.
BALANCE SHEET
JUNE 30, 1993 AND JUNE 30, 1992

	<u>1993</u>	<u>1992</u>
ASSETS		
CURRENT ASSETS		
Cash and Cash Equivalents - partially restricted	\$ 519,269	\$ 345,692
Short-Term Investments	360,468	329,222
Pledges and Grants Receivable	165,642	554,414
Interest Receivable	6,389	-
Total Current Assets	<u>1,051,768</u>	<u>1,229,328</u>
FURNISHINGS AND EQUIPMENT		
Automobile	11,075	11,075
Office Equipment	24,243	24,243
	<u>35,318</u>	<u>35,318</u>
Less Accumulated Depreciation	<u>23,657</u>	<u>17,447</u>
	<u>11,661</u>	<u>17,871</u>
	<u>\$ 1,063,429</u>	<u>\$ 1,247,199</u>
LIABILITIES AND FUND BALANCE		
CURRENT LIABILITIES		
Accounts Payable	\$ 150	\$ 4,350
Accrued Payroll and Related Liabilities	25,874	28,407
Grants Payable	8,973	15,947
Deferred Gifts and Grants Revenue	<u>588,310</u>	<u>827,905</u>
Total Current Liabilities	<u>623,307</u>	<u>876,609</u>
FUND BALANCE, Unrestricted	<u>440,122</u>	<u>370,590</u>
	<u>\$ 1,063,429</u>	<u>\$ 1,247,199</u>

The accompanying notes are an integral part of these financial statements.



Financial Report

WEST VIRGINIA EDUCATION FUND, INC. STATEMENT OF REVENUE AND SUPPORT, EXPENSES, AND CHANGES IN FUND BALANCE YEARS ENDED JUNE 30, 1993 AND JUNE 30, 1992

	1993			1992		
	Unrestricted	Restricted	Total	Unrestricted	Restricted	Total
Revenue and Support						
Gifts and Grants	\$ 286,670	\$ 450,451	\$ 737,121	\$ 258,267	\$ 233,751	\$ 492,018
Interest Income	25,434	-	25,434	27,125	-	27,125
Other Income	2,065	-	2,065	4,867	-	4,867
Total Revenue and Support	<u>314,169</u>	<u>450,451</u>	<u>764,620</u>	<u>290,259</u>	<u>233,751</u>	<u>524,010</u>
Expenses						
Program Services:						
Classroom Minigrants	55,693	25,992	81,685	84,552	10,291	94,843
Partnerships in Education	60,684	63	60,747	54,495	5,000	59,495
Education Policy Research	-	121,783	121,783	-	85,827	85,827
WV Business Education Alliance	-	142,067	142,067	-	55,777	55,777
Read Aloud	-	72,177	72,177	-	31,499	31,499
Schools Ahead 21	5,530	26,489	32,019	16,087	24,000	40,087
College Bound	-	18,057	18,057	22,723	-	22,723
Other	12,621	43,823	56,444	9,447	21,357	30,804
Total Program Services	<u>134,528</u>	<u>450,451</u>	<u>584,979</u>	<u>187,304</u>	<u>233,751</u>	<u>421,055</u>
Management and General	27,559	-	27,559	34,995	-	34,995
Fund Raising	82,550	-	82,550	62,611	-	62,611
Total Expenses	<u>244,637</u>	<u>450,451</u>	<u>695,088</u>	<u>284,910</u>	<u>233,751</u>	<u>518,661</u>
EXCESS OF REVENUE AND SUPPORT OVER EXPENSES	69,532	-	69,532	5,349	-	5,349
Fund Balance, Beginning of Year	<u>370,590</u>	-	<u>370,590</u>	<u>365,241</u>	-	<u>365,241</u>
Fund Balance, End of Year	<u>\$ 440,122</u>	<u>\$ -</u>	<u>\$ 440,122</u>	<u>\$ 370,590</u>	<u>\$ -</u>	<u>\$ 370,590</u>

The accompanying notes are an integral part of these financial statements.



Financial Report

WEST VIRGINIA EDUCATION FUND, INC. STATEMENT OF CHANGES IN CASH YEARS ENDED JUNE 30, 1993 AND JUNE 30, 1992

	1993	1992
Cash From Operations		
Excess of Revenue and Support Over Expenses	\$ 69,532	\$ 5,349
Add Charge Not Affecting Cash:		
Depreciation	6,210	5,923
Decrease (Increase) in Operating Assets		
Pledges Receivable	388,772	(171,221)
Interest Receivable	(6,389)	-
Increase (Decrease) in Operating Liabilities		
Accounts Payable	(4,200)	(5,576)
Payroll and Related Liabilities	(2,533)	4,804
Grants Payable	(6,974)	(3,322)
Deferred Gifts & Grants	<u>(239,595)</u>	<u>404,974</u>
Cash Provided by Operations	<u>204,823</u>	<u>240,931</u>
Cash From Investing Activities		
Purchases of Equipment	-	(8,481)
Net Purchases of Short-Term Investments	<u>(31,246)</u>	<u>(19,097)</u>
Cash Used by Investing Activities	<u>(31,246)</u>	<u>(27,578)</u>
INCREASE IN CASH	173,577	213,353
Cash and Cash Equivalents, Beginning of Year	<u>345,692</u>	<u>132,339</u>
Cash and Cash Equivalents, End of Year	<u>\$ 519,269</u>	<u>\$ 345,692</u>

The accompanying notes are an integral part of these financial statements.



Financial Report

WEST VIRGINIA EDUCATION FUND, INC.
NOTES TO FINANCIAL STATEMENTS
JUNE 30, 1993

NOTE 1 -- SUMMARY OF SIGNIFICANT ACCOUNTING POLICIES

GENERAL - The West Virginia Education Fund, Inc. (the Fund) was established in 1983 as a nonstock corporation under the laws of the State of West Virginia. The primary purpose of the West Virginia Education Fund, Inc. is to advance the quality of public education in West Virginia schools.

The programs of the Fund consist of Classroom Minigrants, Partnerships in Education, College Bound, and various other programs. The Classroom Minigrants program awards grants to deserving teachers to support their innovative projects for which funding would otherwise be unavailable. In the Partnerships in Education program, schools and businesses or other private sector organizations work together for a cooperative, mutually beneficial relationship. The College Bound program was established to encourage more high school graduates to attend college or other post secondary training. The Schools Ahead 21 Program recognizes schools that are doing an outstanding job of preparing students for success in the 21st century. The Education Policy Research Program is designed to explore core policy issues in public school education. West Virginia Business and Education Alliance is an effort, in conjunction with the National Business Roundtable, to improve public education. The Read Aloud Program teaches children the joy of reading. The State School Superintendent's Discretionary Fund is a program designed to allow the State School Superintendent to get involved in additional educational matters statewide. Funding for these programs is principally by gifts and grants from individuals, corporations, foundations, and others.

INCOME TAX STATUS - The Fund is classified by the Internal Revenue Service as a nonprofit organization under the provisions of Code Sec. 501(c)(3), and is exempt from income taxes on income derived from its nonprofit activities. In addition the Fund is classified as an organization other than a private foundation.

CASH AND SHORT-TERM INVESTMENTS - Substantially all cash is deposited in an interest bearing account with a large West Virginia bank. The amount in this account often substantially exceeds the federally insured maximum of \$100,000. Short-term investments are stated at cost, which approximates market, and consist primarily of U.S. Treasury Notes with maturities ranging from 1994 through 1999. All short-term investments are held at one national brokerage firm.

FURNISHINGS AND EQUIPMENT -- Donated furnishings and equipment are not recorded by the Fund, due to the insignificance of dollar amount and the difficulty of determining value. Purchased furniture and equipment are stated at cost. Depreciation is computed using the straight-line method over the estimated useful lives of the assets, which range from three to five years.

GRANTS AND AWARDS EXPENSE -- Grants and awards are recorded as expense in the period in which they are approved by the Board of Directors. Grants payable at year end consist of grants approved and awarded but not disbursed. Refunds of the unexpended portion of grants are netted against expense in the period the refunds are received.

EXPENDABLE RESTRICTED RESOURCES -- Gifts or grants restricted by the donor, grantor, or other outside party for particular purposes are deemed to be earned and reported as revenues when expenditures in compliance with the specific restrictions have been incurred. Prior to meeting specified restrictions, such gift or grant revenue is deferred.

GIFTS AND GRANTS, AND PLEDGES RECEIVABLE -- Legally enforceable pledges are recorded as receivables in the year made. Pledges for support of current operations are recorded as revenue. Pledges for support of future operations are recorded as deferred revenue. If the donor does not specify which period is being supported, revenue is recognized when payments are scheduled to be received. Pledges are received from foundations, businesses, and individuals who are located in or have an interest in the State of West Virginia. Substantially all of the total pledges receivable are due from the Claude Worthington Benedum Foundation.

FUNCTIONAL ALLOCATION OF EXPENSES -- The costs of providing the various programs and other activities have been summarized on a functional basis in the statement of revenue and support, expenses and changes in fund balance. Accordingly, certain costs have been allocated among the programs and supporting services benefited.

NOTE 2 -- PENSION PLAN

The Fund has a defined contribution pension plan for all full-time employees. Monthly contributions equal to 8% of an



Financial Report

employee's monthly compensation are required under the Plan. Contributions are funded as accrued. Total expense was \$23,337 for 1993 and \$23,508 for 1992.

NOTE 3 -- DEFERRED REVENUE

Deferred Revenue at June 30, 1993 and 1992, consists of gifts and grants for the following programs:

	<u>1993</u>	<u>1992</u>
Education Policy Research	\$ 195,387	\$ 311,577
West Virginia Business and Education Alliance	129,656	124,223
Read Aloud	185,709	257,886
Other	<u>77,558</u>	<u>134,219</u>
	<u>\$ 588,310</u>	<u>\$ 827,905</u>

NOTE 4 -- OPERATING LEASES

The Fund leases its office space under an operating lease which expires on September 30, 1994. Total rent expense for the years ended June 30, 1993 and 1992 was \$21,660 and \$19,245, respectively. Minimum future rental payments under this lease are as follows:

Year Ended	Future Rental Payments
June 30, 1994	\$ 22,860
June 30, 1995	<u>5,790</u>
	<u>\$ 28,650</u>



Certified Public Accountants

INDEPENDENT AUDITORS' REPORT ON ADDITIONAL INFORMATION

The Board of Directors
West Virginia Education Fund, Inc.

Our audit was made for the purpose of expressing an opinion on the basic financial statements for the years ended June 30, 1993 and 1992, taken as a whole. The additional financial information included on pages 32 and 33 is presented for purposes of additional analysis and is not a required part of the financial statements of West Virginia Education Fund, Inc. The information contained in the schedule of functional expenses for the years ended June 30, 1993 and 1992, on pages 32 and 33, has been subjected to the auditing procedures applied in our audit of the basic financial statements and, in our opinion, is fairly stated in all material respects in relation to the basic financial statements for the years ended June 30, 1993 and 1992, taken as a whole.

Suttle & Stalnaker

August 9, 1993

WEST VIRGINIA EDUCATION FUND, INC.
 SCHEDULE OF FUNCTIONAL EXPENSES
 YEAR ENDED JUNE 30, 1993

	Program Services											
	Classroom Minigrants	Partnerships in Education	Schools Ahead-21	College Bound	Read Aloud	Education Policy Research	WV Business & Education Alliance	Other	Total Program Services	Fund Raising	General and New Program Development	Total
GRANTS & AWARDS												
Classroom Minigrants	\$50,574	\$ -	\$ -	\$ -	\$ -	\$ -	\$ -	\$ -	\$50,574	\$ -	\$ -	\$50,574
Schools Ahead-21	-	-	24,000	-	-	-	-	-	24,000	-	-	24,000
Other	-	-	-	3,458	2,591	-	-	46,488	52,537	-	-	52,537
TOTAL GRANTS & AWARDS	50,574	-	24,000	3,458	2,591	-	-	46,488	127,111	-	-	127,111
PROGRAM MANAGEMENT & SERVICES												
Payroll & Related Expenses	18,910	43,584	4,304	11,041	58,459	85,666	58,432	-	280,396	73,435	24,284	378,115
Rent	3,116	3,219	177	501	3,185	4,418	3,617	168	18,401	2,856	403	21,660
Supplies	2,235	2,240	115	378	774	2,910	3,792	15	12,459	314	336	13,109
Telephone	715	1,361	193	504	762	1,408	1,844	129	6,916	969	166	8,051
Printing	2,994	4,723	600	1,157	2,973	17,399	2,768	-	32,614	948	12	33,574
Postage	1,755	1,556	297	558	705	3,507	1,511	-	9,889	1,153	171	11,213
Automobile	98	803	6	48	294	185	572	-	2,006	890	14	2,910
Travel	68	1,780	1,557	43	1,221	3,724	1,050	-	9,443	1,085	-	10,528
Accounting Fees	415	415	100	150	415	550	550	-	2,595	40	-	2,635
Training	-	-	-	-	-	-	24,358	-	24,358	-	-	24,358
Consultant Fees	-	-	-	-	-	-	22,453	-	22,453	-	-	22,453
Meetings	-	-	-	-	-	-	16,953	-	16,953	-	-	16,953
Other	805	1,066	670	219	798	2,016	4,167	9,644	19,385	860	2,173	22,418
TOTAL PROGRAM MANAGEMENT & SERVICES	31,111	60,747	8,019	14,599	69,586	121,783	142,067	9,956	457,868	82,550	27,559	567,977
TOTAL EXPENSES	\$81,685	\$60,747	\$32,019	\$18,057	\$72,177	\$121,783	\$142,067	\$56,444	\$584,979	\$82,550	\$27,559	\$695,088

WEST VIRGINIA EDUCATION FUND, INC.
 SCHEDULE OF FUNCTIONAL EXPENSES
 YEAR ENDED JUNE 30, 1992

	Program Services											
	Classroom Minigrants	Partnerships in Education	Schools Ahead-21	College Bound	Read Aloud	Education Policy Research	WV Business & Education Alliance	Other	Total Program Services	Fund Raising	General and New Program Development	Total
GRANTS & AWARDS												
Classroom Minigrants	\$63,757	\$ -	\$ -	\$ -	\$ -	\$ -	\$ -	\$ -	\$63,757	\$ -	\$ -	\$63,757
Schools Ahead-21	-	-	24,000	-	-	-	-	-	24,000	-	-	24,000
Other	-	-	-	-	-	-	-	28,518	28,518	-	-	28,518
TOTAL GRANTS & AWARDS	63,757	-	24,000	-	-	-	-	28,518	116,275	-	-	116,275
PROGRAM MANAGEMENT & SERVICES												
Payroll & Related Expenses	23,258	45,148	9,619	16,141	23,246	64,263	38,149	1,381	221,205	55,304	20,038	296,547
Rent	2,115	2,500	577	1,154	2,100	4,825	4,106	-	17,377	1,154	714	19,245
Supplies	630	908	218	588	1,073	2,210	1,577	-	7,204	719	237	8,160
Telephone	865	1,130	291	474	993	2,037	1,625	-	7,415	533	295	8,243
Printing	1,862	4,025	1,714	2,794	1,358	2,911	2,291	487	17,442	1,446	83	18,971
Postage	37	1,100	59	69	47	65	26	118	1,521	79	7,045	8,645
Automobile	451	533	123	246	492	1,025	821	-	3,691	246	113	4,050
Travel	64	1,742	-	260	339	768	863	-	4,036	2,157	-	6,193
Accounting Fees	-	-	-	-	955	1,990	1,592	-	4,537	478	-	5,015
Other	1,804	2,409	3,486	997	896	5,733	4,727	300	20,352	495	6,470	27,317
TOTAL PROGRAM MANAGEMENT & SERVICES	31,086	59,495	16,087	22,723	31,499	85,827	55,777	2,286	304,780	62,611	34,995	402,386
TOTAL EXPENSES	\$94,843	\$59,495	\$40,087	\$22,723	\$31,499	\$85,827	\$55,777	\$30,804	\$421,055	\$62,611	\$34,995	\$518,661



Education Fund Donors 1992-1993

\$100,000 or more

Claude Worthington Benedum Foundation

\$50,000 to \$99,999

Ashland Oil, Inc.

\$25,000 to \$49,999

C&P Telephone Company of West Virginia
Union Carbide Corporation
Appalachian Power Company
Ashland Oil Foundation
UPS Foundation

\$10,000 to \$24,999

E.I. duPont de Nemours & Co.
Mountain Arts Foundation

\$5,000 to \$9,999

Monongahela Power Company
Ashland Coal
Daywood Foundation
International Industries
Jacobson Foundation
Massey Foundation
West Virginia Humanities Council

\$2,500 to \$4,999

CNG Transmission Corp.
One Valley Bank Foundation
Monsanto Fund
CB&T Financial
Eastern American Energy Corp.
Eastern Associated Coal Corp.
K Mart
Matewan National Bank

\$1,000 to \$2,499

American Electric Power Service Corp.
Ames Lawn & Garden Tools
GTE Foundation
Hope Gas
West Virginia Dental Alliance
Arrow Industries Corporation
Berwind Land Company
Chapman Printing Company
Charleston Area Medical Center
Corning, Inc. - Parkersburg
E.I. duPont de Nemours & Co. - Parkersburg
C.O. Erickson
GE Plastics
Patterson Bell & Crane
Rhone - Poulenc
Bernard McDonough Foundation
Union Carbide Corporation - Sistersville
L.N. Thomas, Jr.
Aladdin Food Management Services
American Commercial Barge Lines

Arco Chemical Company
Carbon Fuel Foundation
Charleston National Bank
Charleston Town Center
Columbia Natural Resources
William Maxwell Davis
Dickinson Properties Ltd.
E.I. duPont de Nemours & Co. - Charleston
Equitrans, Subsidiary of Equitable Resources
Ernst & Young
Gandee & Partners
Haddad & Associates
Herscher Foundation
Huntington Foundation
Jostens Learning Corporation
Vivian G. Kidd
Kimberly Industries
McJunkin Corp.
McDonough Caperton-Charleston
Mountain State Blue Cross Blue Shield
Neighborgall Construction
Parkersburg Rotary Club
Phillips Machine Service
Joseph C. Phillips
PPG Industries
Putnam County Bank
Senator & Mrs. John D. Rockefeller, IV
Shell Oil Company Foundation
W.T. Slicer
St. Francis Hospital
Steptoe & Johnson
The United Company
West Virginia University Hospitals

\$500 to \$999

Gatewood Products
SBR, Inc.
United National Bank-Charleston
United National Bank-Parkersburg
Alcan Rolled Products Company
The Mountain Company
FCFT Inc.
Mary Hughes
Herchel Sims, Jr.
Vienna Pioneer Lions Club
Appalachian Power Company - Charleston
Astorg & Altizer
Bank of Raleigh
Beckley National Bank
C & E Corporation
Camden Clark Hospital
Charleston Marriott
Charleston Ordnance Center
D.E. Cochran
Commercial Bank
Eagle Manufacturing Company
Fahlgren Martin
First Empire Federal Savings
First National Bank of Morgantown
FMC Corporation - Nitro
Gas Access Systems

Grant-McLellan Surgical Associates
Hancock County Savings Bank
B.W. Harvey
Robert L. Kosnoski
Marietta Coal Company
H. Wayne Mason
Merchants National Bank
Merrill Lynch
Midland Enterprises
Miles, Inc.
Parkersburg Community Foundation
Parkersburg New Car & Truck Dealers Association
John Paull
Pioneer Fuel Corporation
Gordon Prescott
Princeton Community Hospital
Ervin S. & Jean H. Queen
Mr. and Mrs. Robert B. Sayre
Spilman, Thomas, Battle & Klostermeyer
Mr. and Mrs. N.M. Steen
Storck Baking
Syscan
Wehrle Foundation
WesBanco Bank - Wellsburg
Wheat First Securities
Windsor Coal Company

\$250 to \$499

Quorum Corporation
Michael Albert
Mary Jordan Smith
Precision Pump & Valve
C.R. Hill, Jr.
Ohio Valley Health Services & Education Corp.
Judge & Mrs. Frederick P. Stamp, Jr.
Kanawha Manufacturing Co.
William T. Tracy
Herbert E. Jones, Jr.
Smith Company Motor Cars
Lewis McManus
Jefferson Distributing Co.
E.V. Bowman
Coal Power Corporation
Fed One Savings Bank
Hal Green Chevrolet
Lillys' Crown Jewelers Corp.
Dr. Henry Marockie
Occidental Chemical Corporation
Lacy I. Rice, Jr.
Security National Bank
West Virginia American Water Co.
Winans Sanitary Supply Company
Altrusa Club - Parkersburg
Appalachian Power Company - Logan/Williamson
Benson Truck Bodies
Bluefield Management Services
Boone National Bank
Browning Ferris Industries
Bunner Ridge Equestrian Center
Cash Control, Inc.
Charleston Newspapers
City National Bank - Fairmont

Buckner Clay
Charles K. Connor, Jr.
DiTrapano & Jackson
Ear, Nose & Throat Associates of Clarksburg
L. Edward Eckley, D.D.S.
Guy Erwin
F&M Bank - Martinsburg
Fairmont Printing Company
Fenton Foundation
First Huntington National Bank
First West Virginia Bank, N.A.
Glem Company
Humana of West Virginia
Huntington Federal Savings & Loan
Bill & Marilyn Joerg
Priscilla & Carr Leavitt
Sally M. Love
Mabscott Supply Company
Marion County Sheriff Association
James B. McCartney
Medical Administrative Services
Mid Atlantic Management Services
Mid West Steel
Mooney - Osborne & Associates
H.F. Mooney, Jr.
Nelson's Drug Store
F.W. Newton Company
F. O'Donnell Northrup
Old National Bank
One Valley Bank of Morgantown
Peerless Eagle Coal Co.
Peoples National Bank - Martinsburg
Prudential Securities
Shearson Lehman
Simpson & Osborne
Singer Sheet Metal Company
Sunshine Bank of Wheeling
Thomas Memorial Hospital
W.S. Thomas Transfer Company
Jerry Thompson
United National Bank - Central
United National Bank - North
United National Bank - South
James E. Valentine, D.D.S.
Cecil I. Walker Machinery
Georgia Wallace
WesBanco Bank - Wheeling
Wheeling Hospital

\$100 to \$249

David Long
Adventure Communications, Inc.
Benefit Plans Services, Inc.
Broughton Food Company
Ann Brotherton
Cabot Corporation
Carson Insurance Agency
Central Printing Co.
Commerce Bank - Charleston
Cosenza, Underwood & Marshall
Robert W. Culler
Curry Transfer & Storage Co.
Harry B. Davenport, III
Delta Electric

Education Fund Donors 1992-1993

Drug Emporium
Thad Epps
City of Glen Dale
Greer Law Offices
Halltown Paperboard
Hawley Corporation
Lee O. Hill
Jackson & Kelly
Kanawha City Company
Mrs. E.D. Knight
Mercantile Bank - Moundsville
Morrison Building
J.C. Penney Company-Charleston
Ira R. Phillips
Putnam General Hospital
Scott & Associates
Smith Concrete
Carl Stephens Construction Co.
Tri-State Roofing & Sheet Metal Co.
Warwood Armature Repair Co.
WesBanco Bank - Parkersburg
WESCO Corporation
West Virginia Glass Company
Westvaco - Timberline Division
WYK Associates
Manchin, Aloï & Carrick
Terri Worthy
Andrew G. Hague
James Mahurin
Nicholas County Bank
Sharon & Jim Rowe
Tyler Mountain Water Company
Gary C. White
Syed A. Zahir, M.D.
Chestnut Ridge Hospital
Van Wyk Enterprises
Robert W. Abbot
All-Care Medical Supply
Alpha Delta Kappa - Beta Chapter
AT&T - Martinsburg
Allan Babcock
Badger Lumber
Bank of Charles Town
Bank of Weirton
Banner Fibreboard Company
Lawrence Barker
Virginia K. Batton
Beckley Newspapers
Berry, Bippus, Chisson & Foose
David E. Berry
Bill's Electronics
Blake's Kiddie Korral & Attic
Bond Insurance Agency
Breckinridge, Davis, Sproles & Stollings
J.W. Brown
Neil S. Bucklew
Burk & Burk
Clyde Campbell
CGM Contractors
The Char Inc.
Clark & Associates
College Drug Store
Columbo's Restaurant
Community Bank - Parkersburg
Smith & Lilly
Connolly & Associates
Conrad & Clay

Corning, Inc. - Martinsburg
Cytec Industries
George M. Edwards
Ellis & Ellis
Empire National Bank
Equitable Foundation
ERA Wise & Yeager Realty
Fay's Jewelry
FMC Corporation - South Charleston
Joe V. Funderburk
Gleason & Liston, CPA's
William L. Goldsmith
Guard Cleaning Company
Robert Harding
Heilig-Meyers
Roland Hobbs
Holroyd & Yost
Carole & Clifton Hyre
Jan-Care Ambulance
Jones Business Machines
Charles T. Jones
Joyce Engineering
Rick & Jenny Keup
King Coal Chevrolet
Robert Kiss
Landmark Realtors
Laughlin & Wade, Optometrists
John Lee
Stanley M. Leist
Peter B. Lilly
The Lynne Corporation
John McClaugherty
William McDavid
McDonough Caperton - Beckley
Thomas M. McJunkin
Katherine E. McKain
Sue & David McKain
Merrill Photo
Mine Power Systems
Harry S. Moore
Mountaineer Bowling Lanes
Narco Inc.
Robert L. Neal
New River Insurance & Investment Services
North American River Runners
Oak Hill Animal Hospital
Percy Osborne
Emily & Paul Papadopoulos
Parkersburg Office Supply Co.
Peoples Banking & Trust Co.
Manuel Pickus
Plateau Medical Center
Potomac Valley Bank
Pray Construction Company
William C. Preston
Raleigh Hardware Company
Real Estate Resources
RiJa Machining Company
Stephen Roberts
Anne & Carl Selinger
Sidwell Brothers, Inc.
Simpkins & Associates
Smith & Lilly
Hulett Smith
S.R. Snodgrass

Ron & Pat Solomon
In memory of James "Jimmy" Dane Starcher
State Electric Supply Company - Parkersburg
Superior Furniture Company
Annette & Doug Tanner
C. Adam Toney Discount Tires
Tri-State Greyhound Racing Park
Tyree Funeral Home
John W. Vargo, D.D.S.
Mr. and Mrs. Raymond Veon
Laura Viglianco
Virginian Land Company
Dr. Charles H. Wagoner
Larry & Margaret Ann Wakefield
Martha Wehrle
Weirton Studio
Charles H. Wendell
West Virginia Power
West Virginia School of Osteopathic Medicine Clinic
Weyer, Huggins & Associates
Wharton Cadillac/Olds/Jeep/Eagle
White Horse Bed & Breakfast
Wildwater Expeditions Unlimited
Williamstown National Bank
Willis Branch Coal Company
WTNJ Radio
Sam Yanen Ford Sales
Zimm Pharmacy

Up to \$99

John & Tina Corbett
FirstBank Shinnston
Industrial Rubber Products Company - Parkersburg
Harry Stansbury
Air Products & Chemicals-Weirton
John Amos
Bridgeport Bank
Cable Equities of the Virginia's
Chenoweth Ford-Lincoln-Mercury
Stephen R. Crislip
William S. Dukart, M.D.
Fairmont Veterinary Hospital
Brenda & Roger Green
Grisell Funeral Home
John W. Gwinn
Louis H. Harris
Meg & Jack Hewitt
Frank J. Holroyd, M.D.
Horne Family Charitable Trust
Loren B. Howley
Dr. Janis Hurst
J&B Drug Store
Legg Mason Wood Walker, Inc.
Jim Lively Insurance
Britt & Judy McJunkin
C.P. Miller, Jr.
Jeff & Rosie Monroe
T.E. Myles
Paden City Lions Club
Warren Point, M.D.
Radcliff Enterprises
Riesbeck Food Markets





A Decade of Progress

With this report, the West Virginia Education Fund celebrates a decade of progress. Over this 10-year period, its initial program, Minigrants for Classroom Projects, has distributed nearly one-half million dollars to teachers around the state. The Partnerships in Education program has achieved collaborations between businesses and schools in every county in West Virginia, providing students with beneficial new opportunities and skills. These, as well as the Education Fund's five other programs, College Bound, Read Aloud West Virginia, Schools Ahead-21, the Education Policy Research Institute and the West Virginia Business and Education Alliance, have established the credibility of the Education Fund as an effective, professional organization in promoting excellence in education.

The Education Fund's more recent endeavors into the policy arena, to advocate for broader changes for students in the classrooms, will have an even greater effect on the school system in West Virginia. In a recent issue of *Network News*, a publication of the Education Fund, Vivian G. Kidd, the organization's executive director, stated, "The programs of the Education Fund have built an incredibly erudite constituency for quality education in West Virginia, and have provided the private sector with the opportunities and comfort level necessary for them to get involved in policy issues that must be addressed in order for the school system to move forward. This involvement is necessary if we really want to put the *public* back in public schools."



A student in Ms. Mary Scarborough's class at Lewisburg Elementary School places larvae and food replacement in a vial as he participates in "Butterfly Magic." This project was funded with a Minigrants for Classroom Projects award during the 1992-93 school year.



The Nation's First Statewide Public Education Fund

**West Virginia Education Fund
Suite 1520 Kanawha Valley Building
300 Capitol Street
Charleston, West Virginia 25301-1794
(304) 342-7850**